



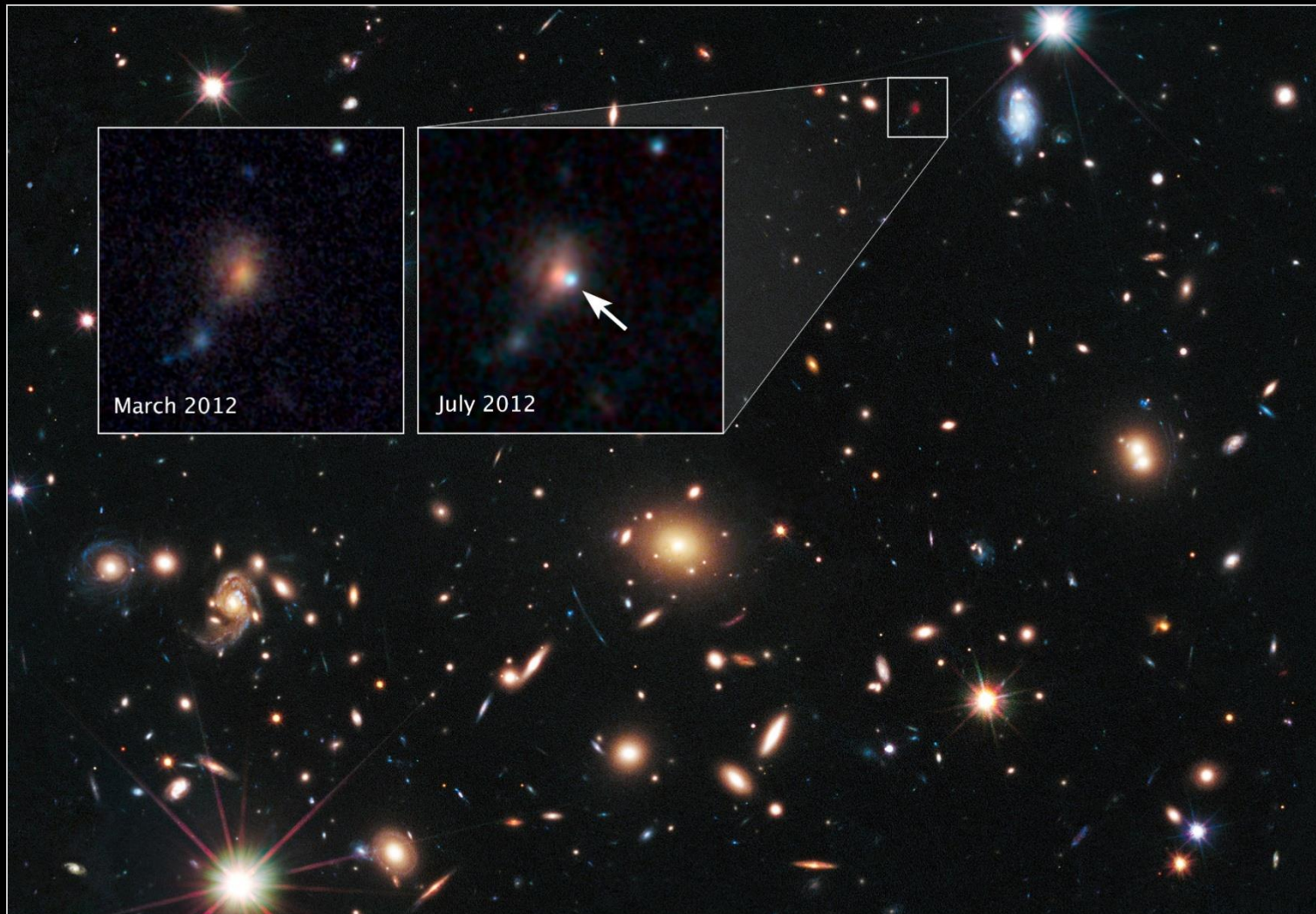
# SUPERNOVAE IA



**NGC 1309**  
**28 Mpc**

Bild: „Supernova 2012Z in spiral galaxy NGC 1309, annotated NGC 1309 28 Mpc“ von NASA, ESA, C. McCully and S. Jha (Rutgers University), R. Foley (University of Illinois), and Z. Levay (STScI)  
Acknowledgment: Hubble Heritage Team (STScI/AURA), and A. Riess (JHU/STScI) via [https://commons.wikimedia.org/wiki/File:Supernova\\_2012Z\\_in\\_spiral\\_galaxy\\_NGC\\_1309\\_annotated.jpg](https://commons.wikimedia.org/wiki/File:Supernova_2012Z_in_spiral_galaxy_NGC_1309_annotated.jpg)  
[CC BY 4.0]

**Supernova 2012Z in Spiral Galaxy NGC 1309**  
*Hubble Space Telescope ■ ACS ■ WFC3*



NGC 1309  
780 Mpc

Bild: „Galaxy Cluster MACS J1720+35“ von NASA, ESA, S. Perlmutter (UC Berkeley, LBNL), A. Koekemoer (STScI), M. Postman (STScI), A. Riess (STScI/JHU), J. Nordin (LBNL, UC Berkeley), D. Rubin (Florida State), and C. McCully (Rutgers University) via <https://esahubble.org/images/heic1409b/> [CC BY 4.0]

Galaxy Cluster MACS J1720+35 ■ Supernova SCP/SN-L2  
Hubble Space Telescope ■ ACS/WFC WFC3/IR