



Softwareverteilung in der paedML Novell 4.x

1. VM mit AdminStudio vorbereiten
2. Arbeiten mit dem AdminStudio

Erst-Autoren: Flogaus, Tonigold, Geiger
Letzte Bearbeitung: Kluge

Stand: Juli 2016

Novell ist nun ein Unternehmen der  Gruppe



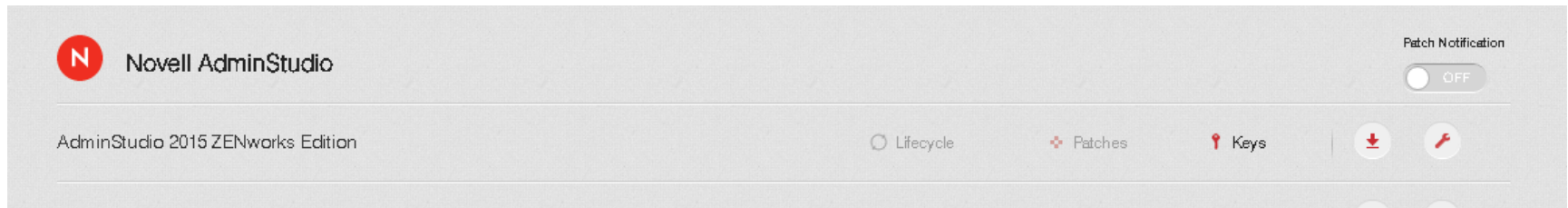


1. VM mit AdminStudio vorbereiten

Novell.

paedML® 4.x

- Im Supportportal von Novell bekommt man die Software und Lizenz kostenlos.
- Anmelden mit seinem Schulaccount
- Unter Software AdminStudio Software und Key herunterladen.



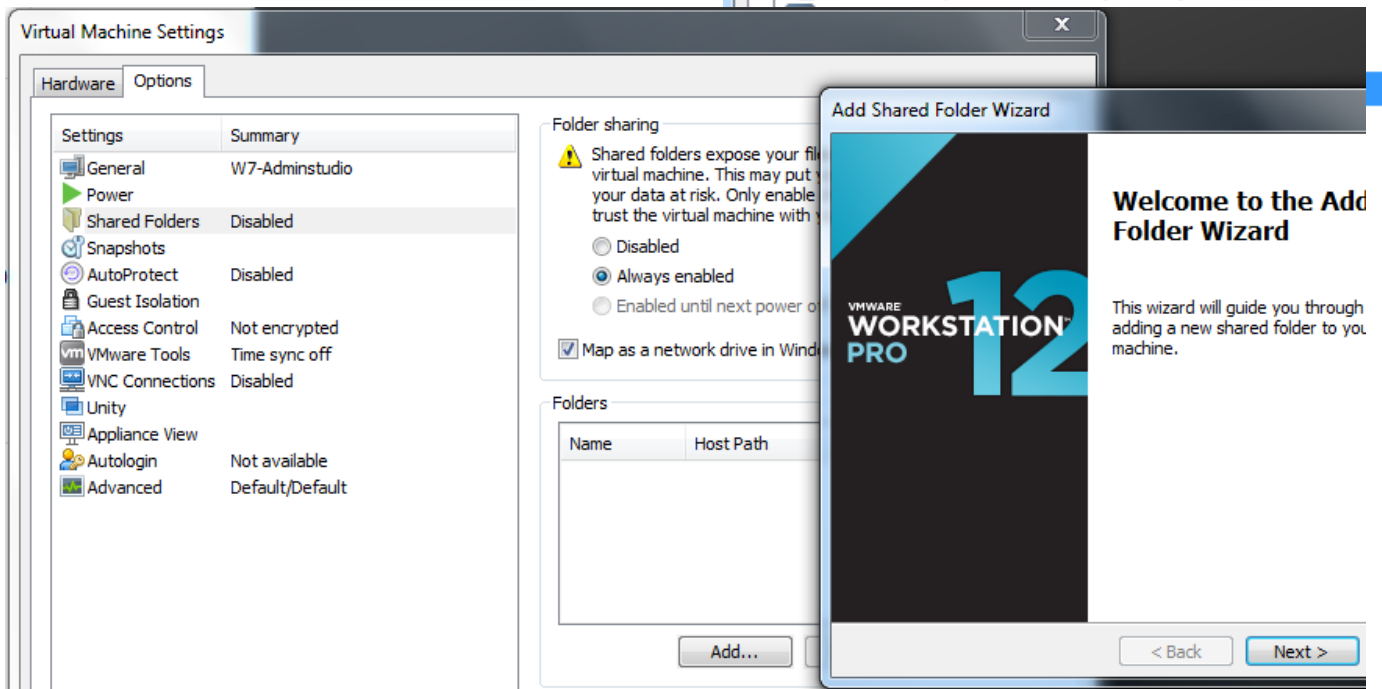
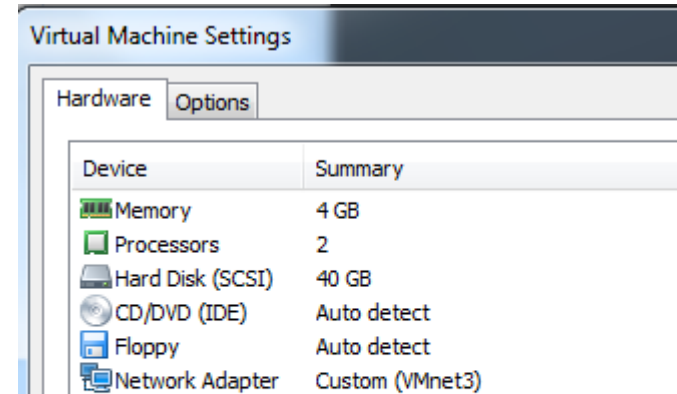


1. VM mit AdminStudio vorbereiten

Novell.

paedML® 4.x

- VM-Konfigurieren:
 - Memory 4GB
 - Processors 2
 - Hard Disk 40GB

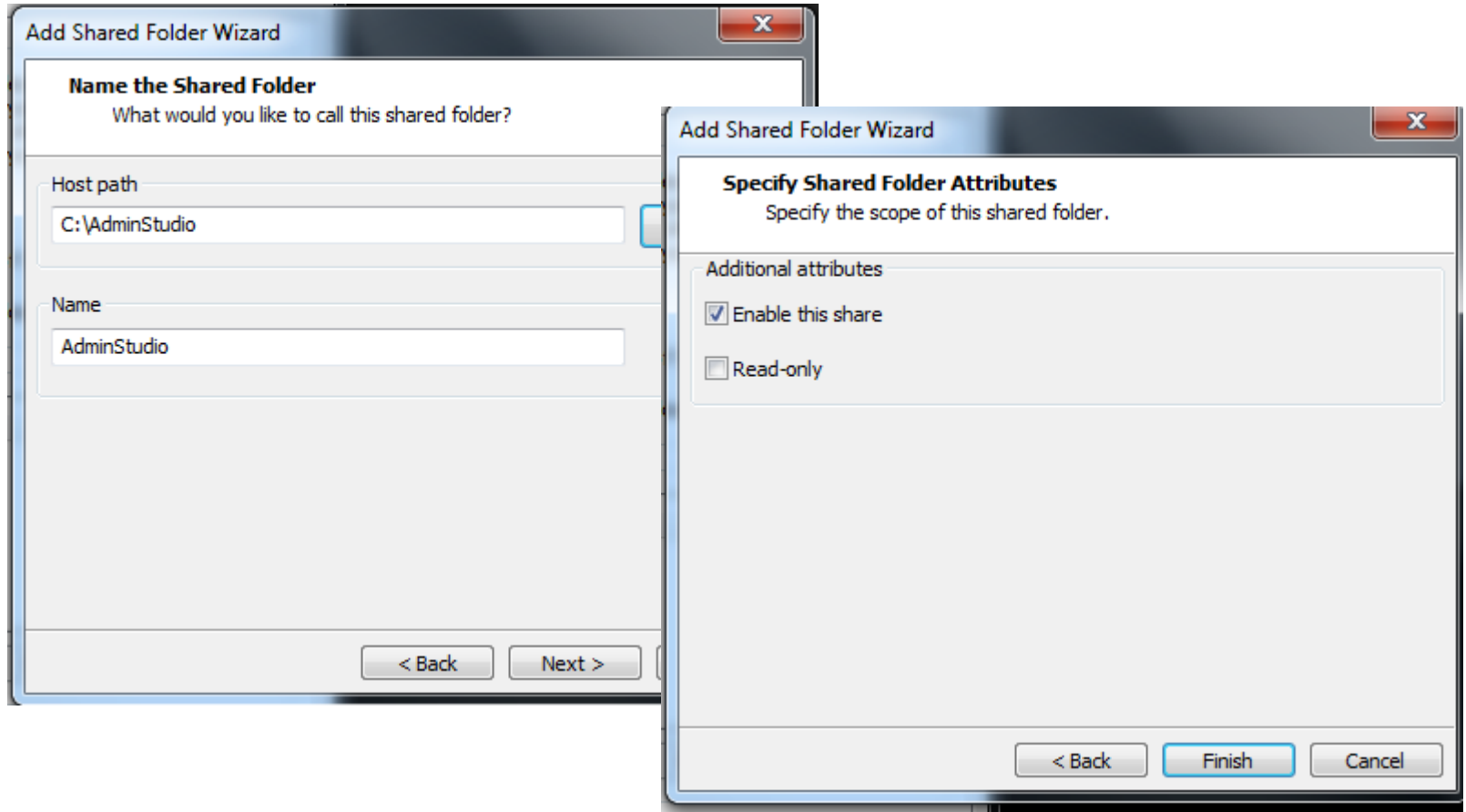




1. VM mit AdminStudio vorbereiten

Novell.

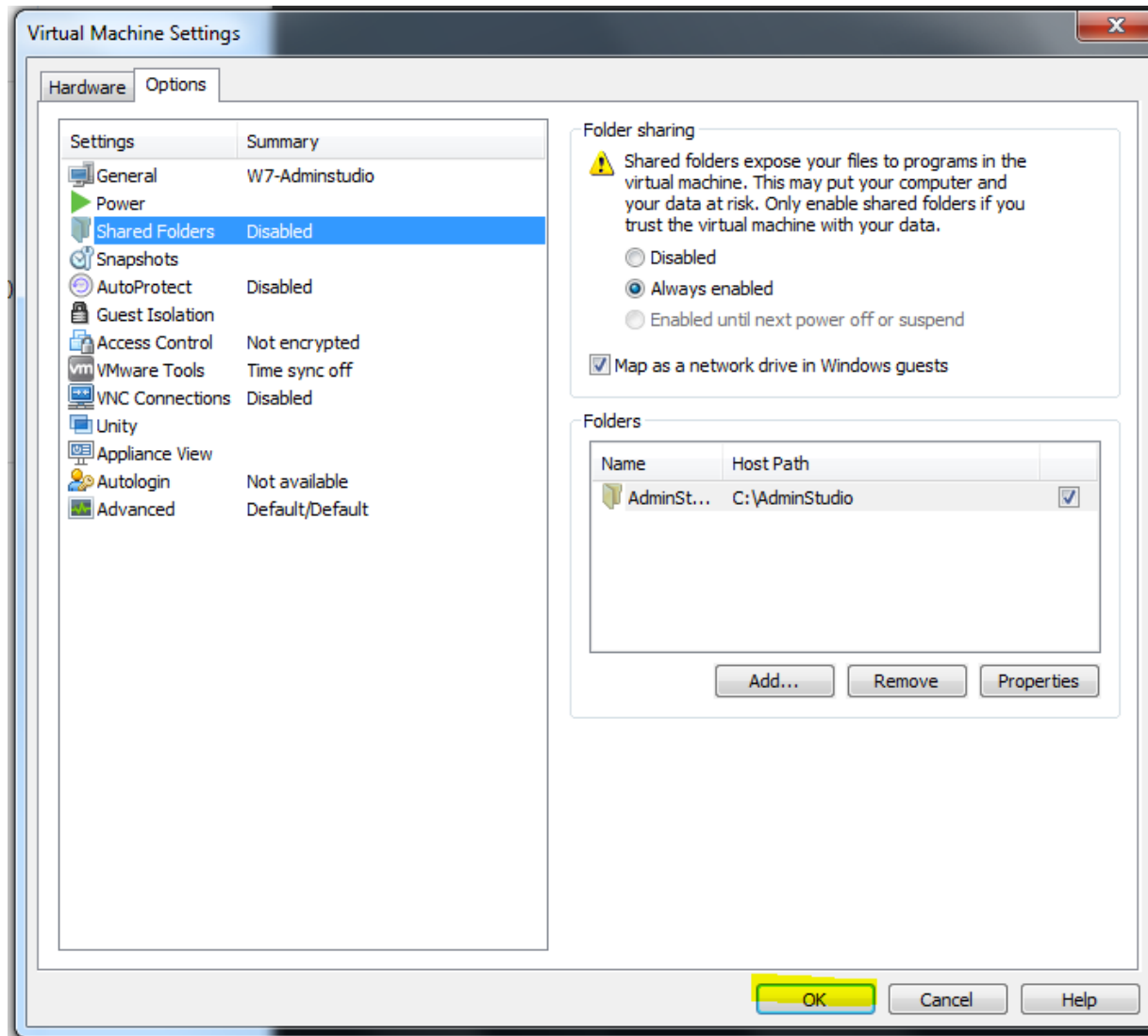
paedML® 4.x





1. VM mit AdminStudio vorbereiten

Novell.
paedML® 4.x



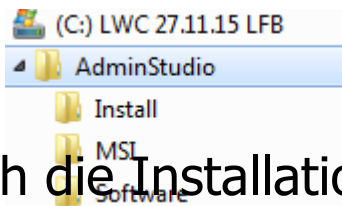


1. VM mit AdminStudio vorbereiten

Novell.

paedML® 4.x

Netzlaufwerk einbinden mit folgender Dateistruktur:
Hier in der LFB Umgebung auf C:



Danach die Installationsdateien von AdminStudio in den Ordner Install Kopieren.

Ordner MSI enthält dann die fertigen MSI-Dateien

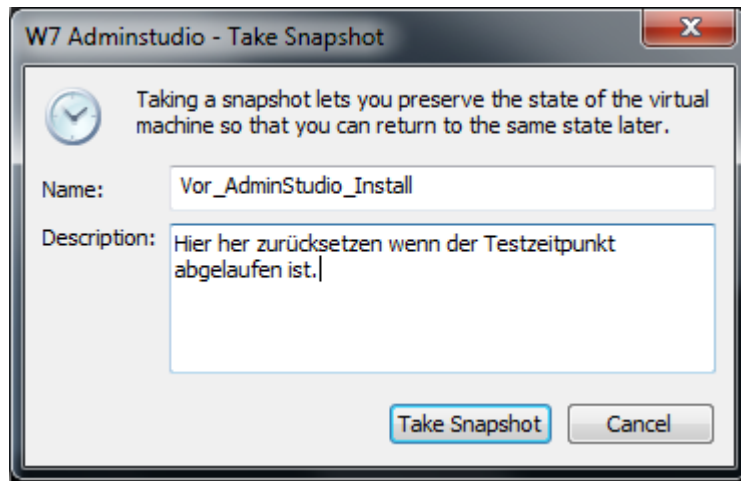
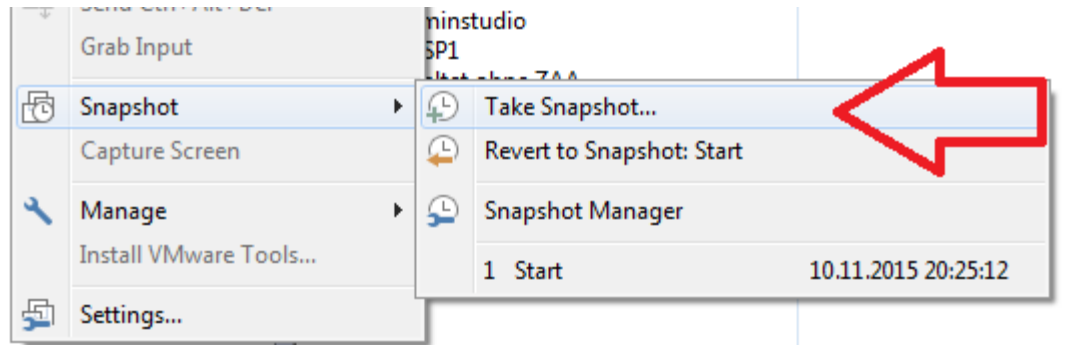
Ordner Software enthält die Software-Ordner die paketiert werden sollen.





1. VM mit AdminStudio vorbereiten

Novell.
paedML® 4.x





1. VM mit AdminStudio vorbereiten

Novell.

paedML® 4.x

VM-Starten, mit Adam lokal anmelden und Installation des AdminStudio unter Z:\ starten.

The screenshot shows the AdminStudio ZENworks Edition - InstallShield Wizard window on the left and a Windows Explorer window on the right. The wizard window displays the Flexera Software logo and the text "Welcome to the InstallShield Wizard for AdminStudio ZENworks Edition". Below this, it states: "The InstallShield(R) Wizard will install AdminStudio ZENworks Edition on your computer. To continue, click Next." A warning message at the bottom reads: "WARNING: This program is protected by copyright law and international". At the bottom of the wizard are "Next >" and "Cancel" buttons.

The Windows Explorer window shows the file system structure. The left pane shows the navigation pane with "Computer" expanded to "(Z:) Shared Folders (\vmwa)". The right pane shows a list of files and folders:

Name	Änderungs
2016-07-12 11_40_39-Customer Center - ...	12.07.2016 1
AdminStudio2015ZENworks.exe	12.07.2016 1
ApplianceMigrationUtility.iso	12.07.2016 1
BundleCommander-setup-1.2.70.exe	12.07.2016 1
Jaspersoft_Studio_5.6.iso	12.07.2016 1



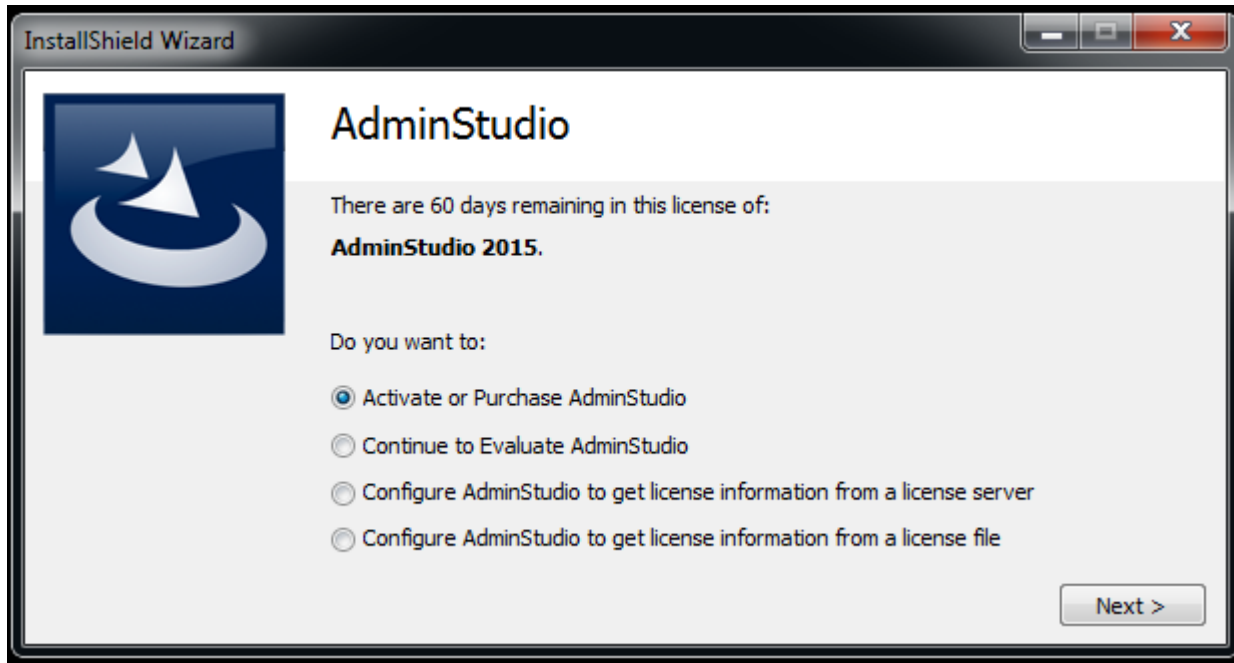


1. VM mit AdminStudio vorbereiten

Novell.

paedML® 4.x

Nach der Installation kann man das AdminStudio mit der eigenen Lizenz vom Novell-Portal aktivieren.

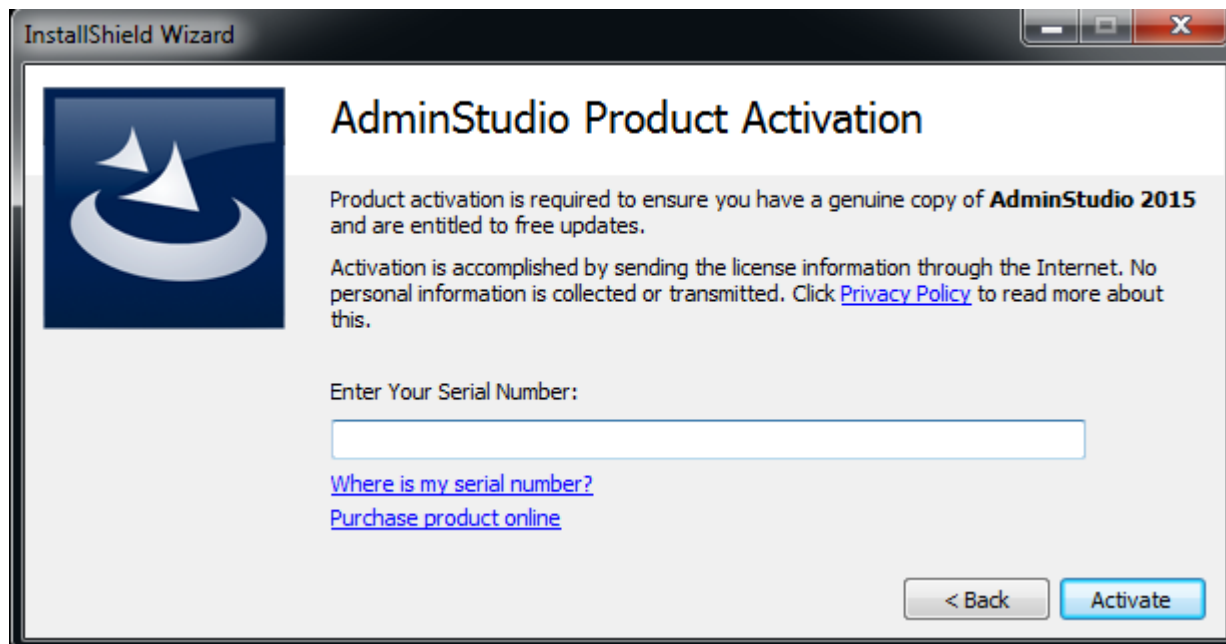




1. VM mit AdminStudio vorbereiten

Novell.

paedML® 4.x



Lizenz eingeben.





1. VM mit AdminStudio vorbereiten

Novell.

paedML® 4.x

Mit dem ZCM-Server verbinden. Der „User Name“ muss ein Administrator Account am ZCM-Server sein.

Ferti

ZENworks Server Login

AdminStudio ZENworks Edition requires a running instance of ZENworks Configuration Management server in order to operate.

Specify the ZENworks Configuration Management server login information and click 'Login' to proceed.

Server URL:

User Name:

Password:

Login Exit

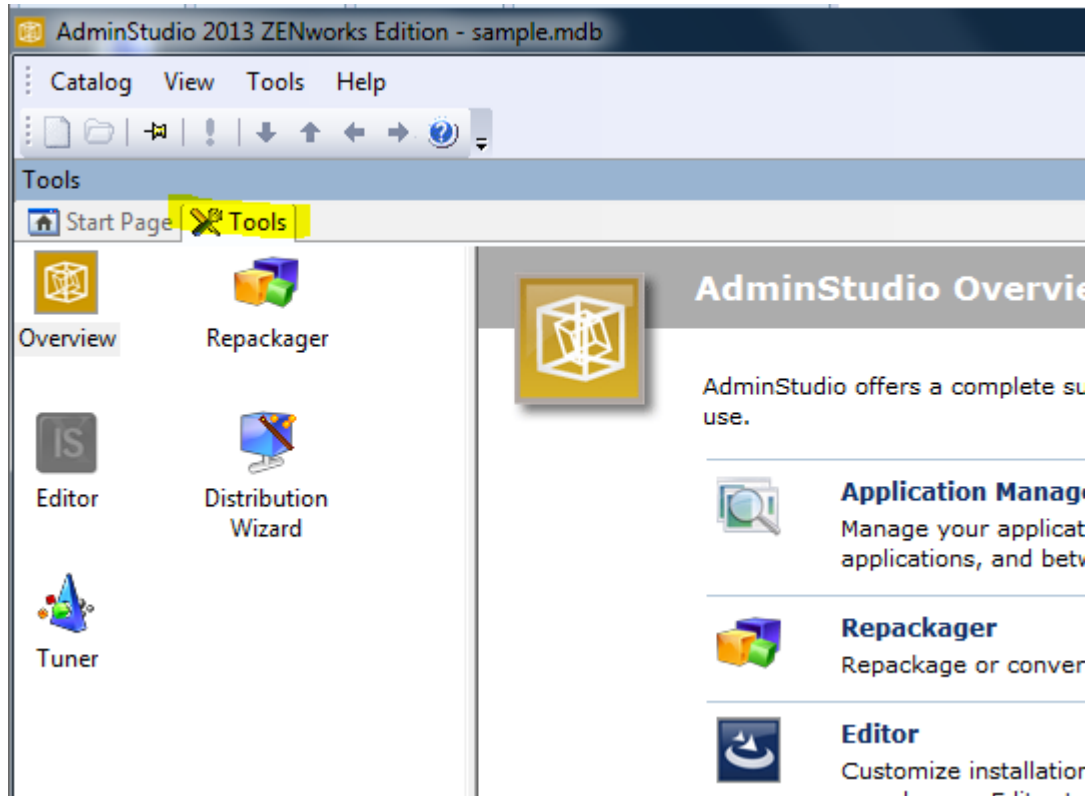




Novell.

paedML® 4.x

2. Arbeiten mit dem AdminStudio





2. Arbeiten mit dem AdminStudio

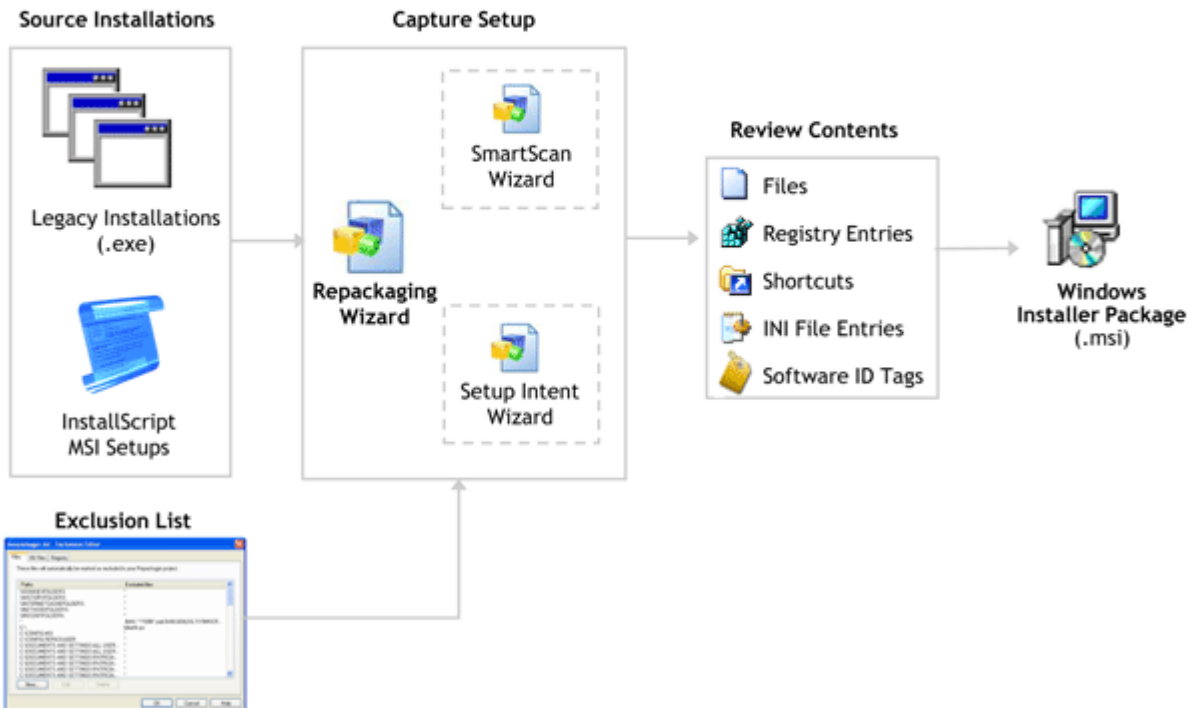
Novell.

paedML® 4.x



Repackage Legacy Installations

The **Repackaging Wizard** is a tool for capturing legacy installations and creating a Repackager project file. You can then use the Repackager interface to exclude captured data and convert the project into a Windows Installer package. You can convert any type of installation including Microsoft SMS, Novell ZENworks, WinINSTALL, and Wise Installation projects, and even convert an InstallScript MSI setup to a basic MSI setup.





2. Arbeiten mit dem AdminStudio

Novell.

paedML® 4.x

Repackager


File View Project Build Tools Help


FLEXERA SOFTWARE™
AdminStudio

? What is the purpose of repackaging applications?

Repackager

You can use Repackager to convert a legacy setup into a Windows Installer package. For more information, see [About Repackaging](#).


 **Capture an Installation Using Repackaging Wizard**
Use the Repackaging Wizard to create a new Repackager project. You can then build a Windows Installer package.

 **Open a Repackager Project**
Open an existing Repackager project. Re-open project:

Repackaging Wizard

Welcome to Repackaging Wizard

This wizard enables you to create a completely new installation for an existing, packaged application. It can also create an installation project that can be further enhanced using InstallShield.

 For optimal use, Repackaging Wizard should be run remotely from a mapped location. See the Help Library topic "Repackaging Wizard Best Practices" for details.

< Zurück Weiter > Abbrechen Hilfe





Wahl der Installationsmethode

Novell.

paedML® 4.x

Repackaging Wizard

Method Selection
Select a repackaging method.

- Installation Monitoring (Recommended)**
Repackager watches lower-level system activities and records changes by the setup program(s). It then analyzes these activities and stores an output file which can be converted into a Windows Installer package.
- Snapshot**
Repackager takes an initial snapshot of the local system, runs the setup program, then takes a second snapshot. The difference between the two snapshots is an output file which can be converted into a Windows Installer package.

The newly improved Install Monitoring method is the default method. It has the potential for cost savings through increased reliability and shorter installation times.

< Zurück Weiter > Abbrechen

Repackaging Wizard

Collect Product Information
Provide product information for repackaging. Items with asterisks (*) are required.

Setup Programs

Program File: *
Z:\AdminStudio_Files\Software\stellarium-0.10.2.exe

Command-line Argument(s):
[Edit Setup List](#)

Product Information

Product Name: *
Stellarium

Version:
1.0

Company Name: *
Hersteller [More](#)

< Zurück Weiter > Abbrechen Hilfe

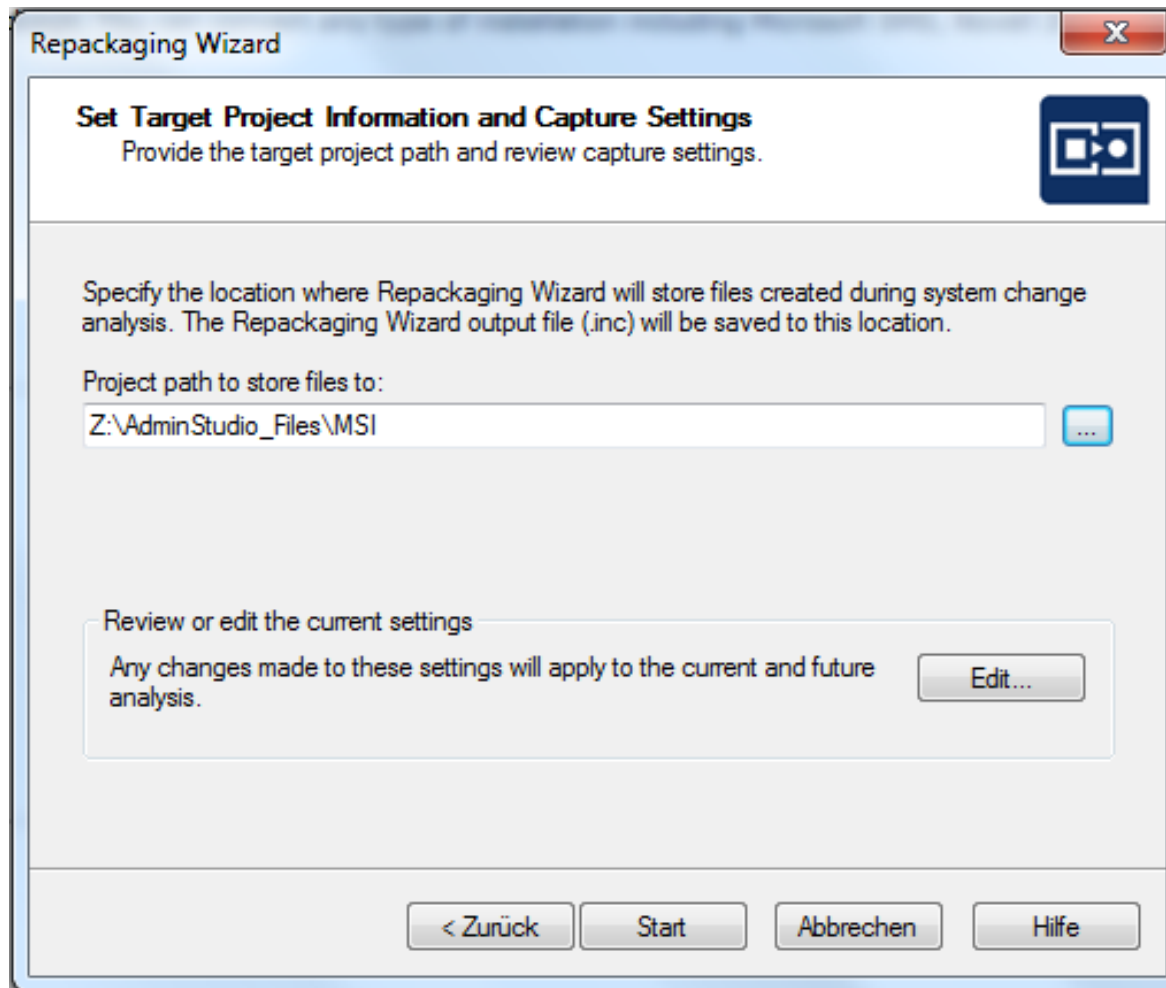




Ordner festlegen

Novell.

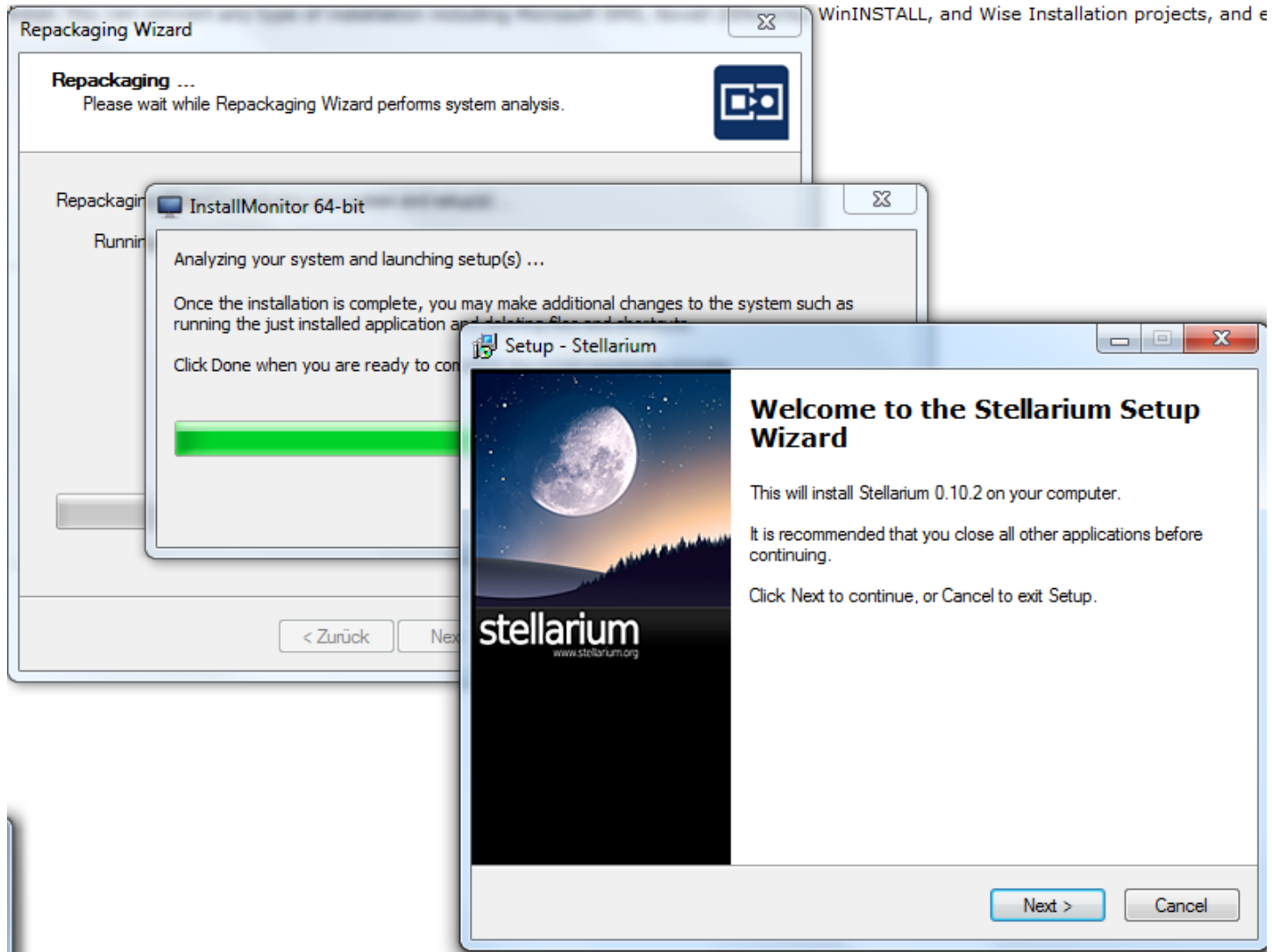
paedML® 4.x





Beginn der Programm-Installation

Novell.
paedML® 4.x



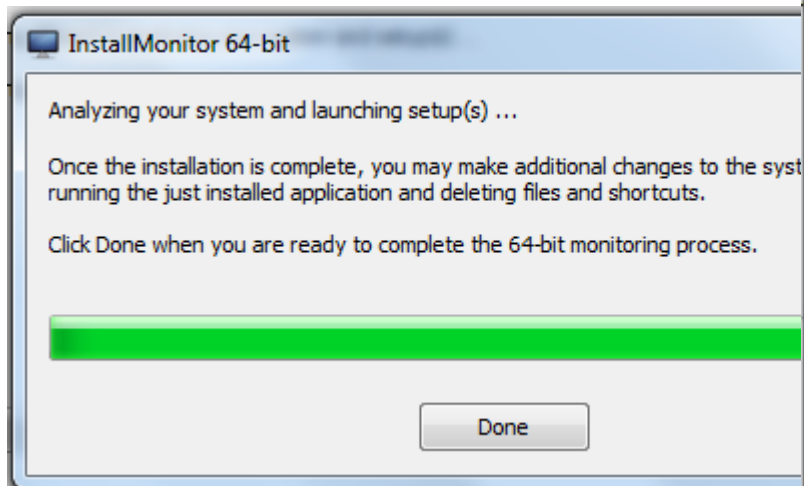


Installation durchführen

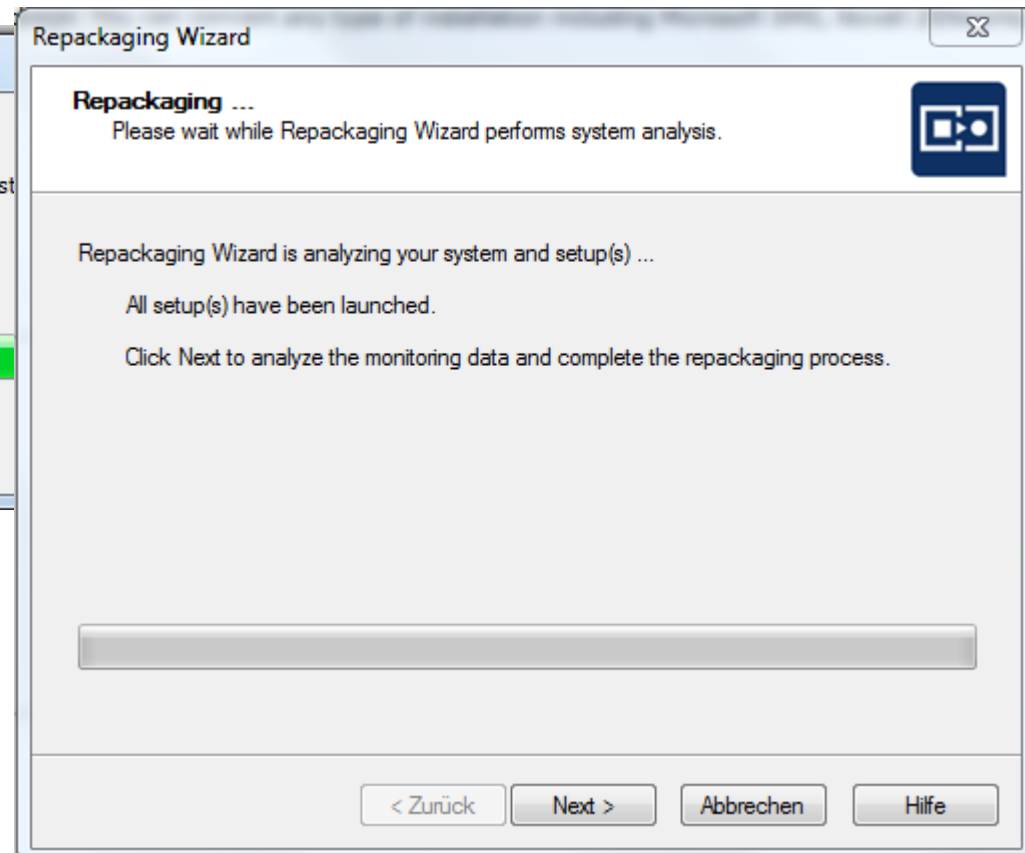
Novell.

paedML® 4.x

Anpassungen am Programm machen.
Danach auf Done klicken.



Danach läuft die Analyse

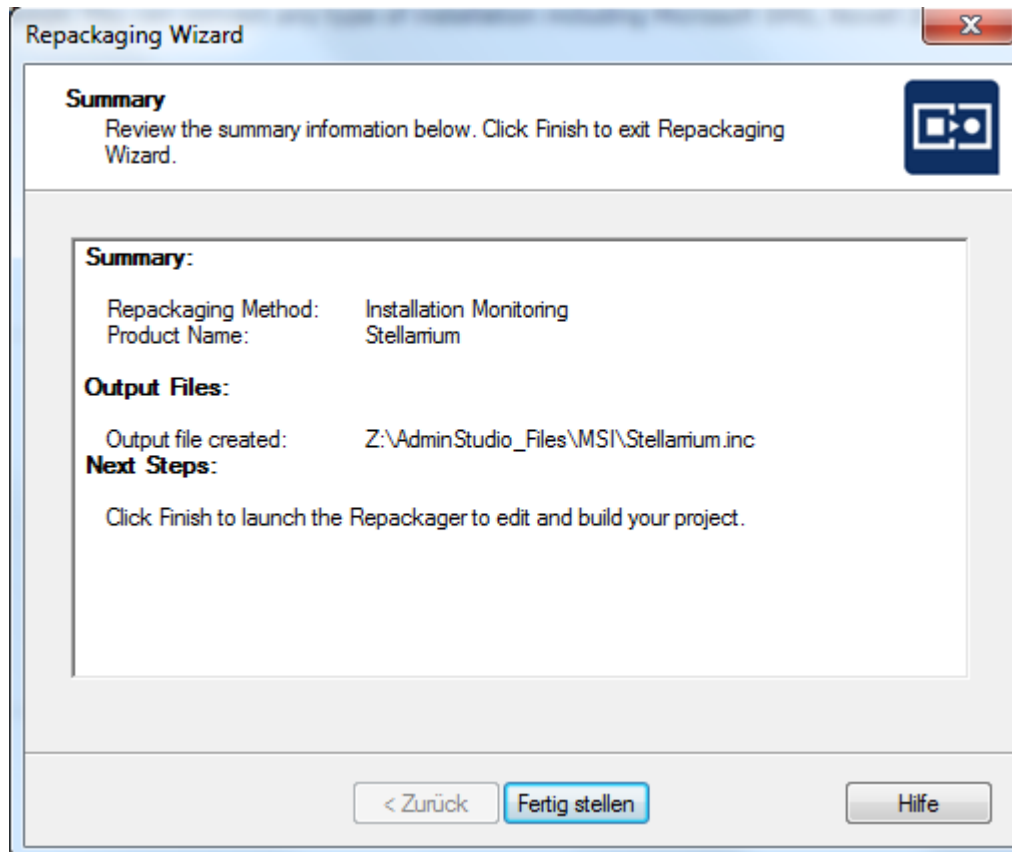




Installation durchführen

Novell.

paedML® 4.x





MSI-Paket erzeugen

Novell.
paedML® 4.x

Stellarium.irp - Repackager

File View Project Build Tools Help

Captured Installation

- Files and Folders
- Registry Entries
- Shortcuts

Repackaged Output

- Package Information
- Software Identification Tag
- Advanced Settings

Captured Installation Summary

Captured Installation Summary

Operating System: Windows 7 (x64), version 6.1.7601 Service Pack 1 (German)

Path to original setup: "Z:\AdminStudio_Files\Software\stellarium-0.10.2.exe"

Original target folder: [ProgramFilesFolder]Stellarium

587 files	3 shortcuts
12 registry entries	0 INI file entries

Captured Installation Tasks

- [Create setup capture report](#)
Generate an HTML or text document that summarizes the captured setup data.
- [Scan for setup intent](#)
Analyze the captured setup data for missing files and files that the original setup intended

Einzelne Informationen überprüfen, ob nur relevante Informationen gespeichert wurden. Danach auf „built“ drücken.





Paket testweise installieren

Novell.

paedML® 4.x

```
Adding Software Id tag 'Z:\AdminStudio_Files\MSI\regid.2009-06.com.flexerasoftware,AdminStudio_Stellarium 0.10.2__Stellarium_is1.swidtag'  
Finished successfully.
```

Conversion complete.

Output file: Z:\AdminStudio_Files\MSI\MSI_Package\Stellarium.msi

Log file created: [Z:\AdminStudio_Files\MSI\Build Log.txt](#)

Ready

Danach liegt das Paket im MSI-Verzeichnis / Netzlaufwerk.

Mit dem Befehl

`msiexec /i Z:\AdminStudio\MSI\MSI_Package\Stellarium.msi /qb`
kann das erstellte Paket an einem Rechner getestet werden.

Pfad entsprechend anpassen!

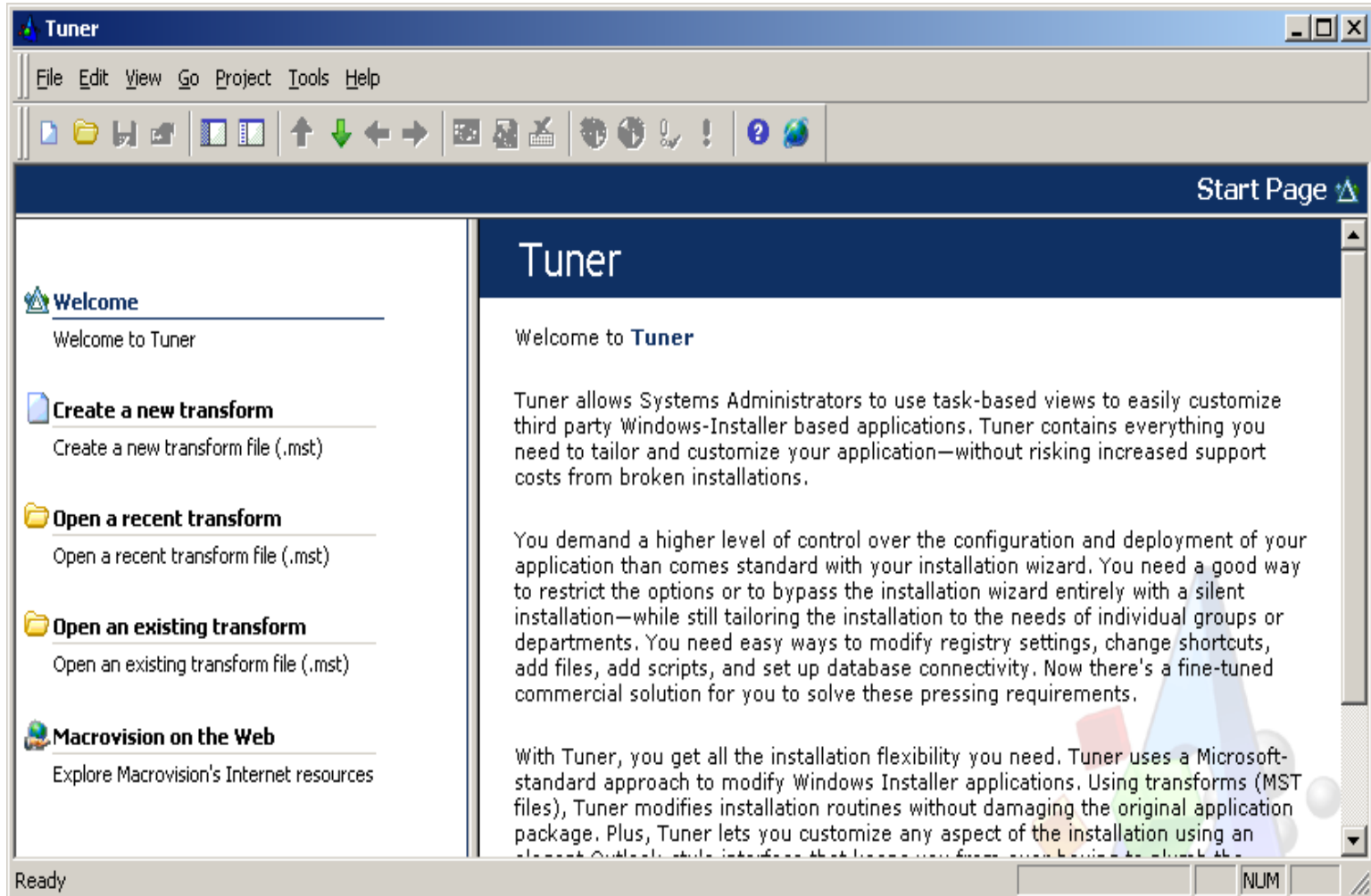




MST-Datei mit dem Tuner erstellen

Novell.

paedML® 4.x





Einstellungen festlegen

Novell.

paedML® 4.x

The image shows two overlapping windows from the OpenOffice installation process. The background window is the 'OpenOffice.mst (OpenOffice.msi) - Tuner' wizard, and the foreground window is the 'Shortcuts' window.

OpenOffice.mst (OpenOffice.msi) - Tuner

- Base Windows Installer Package:** Select an MSI file. Path: `E:\Users\admin\Desktop\OpenOffice.msi`. A 'Browse' button is visible.
- Windows Installer Transforms:** Provide a new project name and location (or accept the default). Path: `E:\Users\admin\Desktop\OpenOffice.mst`.
- Response Transform:** Response Transform. Command line properties (separated by ';') that will be while creating a response transform.
- Create** button.

Shortcuts

- Destination Computer
- ALLUSERSPROFILE
 - OpenOffice.org Impress
 - MATHE Programm**
 - OpenOffice.org Writer

Ready

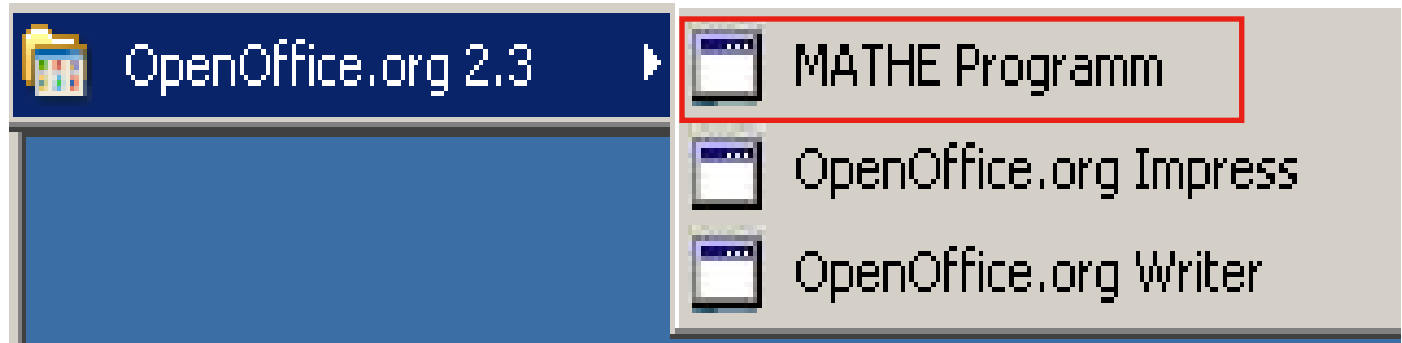
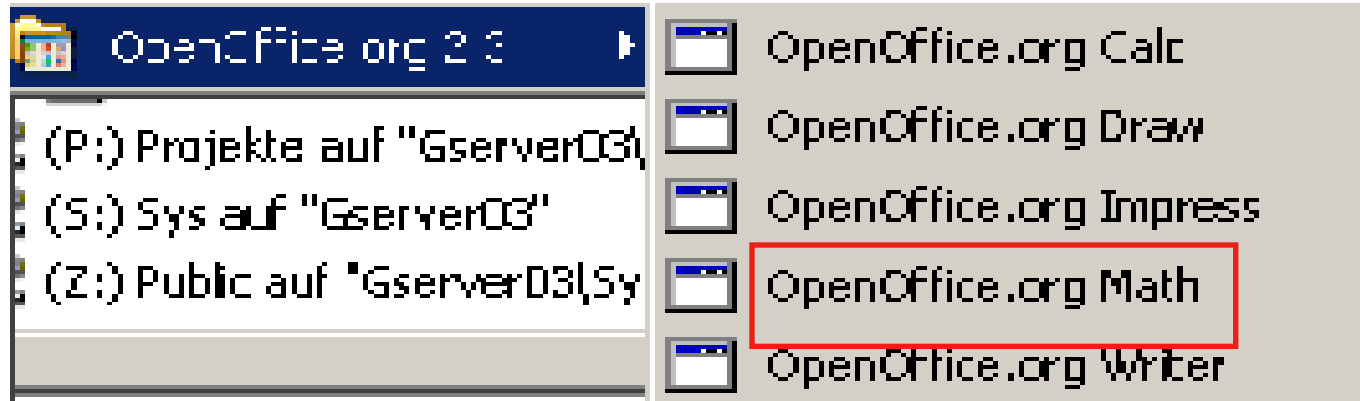




Ergebnis der Installation - Änderungen

Novell.

paedML® 4.x





Eine sehr ausführliche Beschreibung finden Sie im BK-ML41, Kap. 7.11([bk41-07_softwareverteilung.pdf](#))

Erstellen Sie ein MSI-Paket für die OpenOffice-Installation

Als Installationsort legen Sie `K:\OpenOffice` fest
(dies bedeutet eine serverbasierte Installation)

Erzeugen Sie anschließend ein neues Anwendungsobjekt und stellen Sie dieses den Benutzern im NAL zur Verfügung

„Tunen“ Sie das Paket, nehmen Sie einige Änderungen vor und erstellen Sie die MST-Datei!





Novell.

paedML[®] 4.x

- **Nov. 2008: M. Flogaus / A. Tonigold / Th. Geiger**
- **Überarbeitet und erweitert: Juli 2016: Kluge**
- **„1.“ hinzugefügt: Juli 2016: Kluge**

