

## 4104 große Karten für Energieflussdiagr. bei 4123, 4124 und 4125

### Hinweise:

- Man kann die Karten mit [4123\\_AB1\\_Energieuebertragung.docx](#), [4124\\_AB2\\_Energieuebertragung.docx](#) und [4125\\_AB3\\_Energieuebertragung.docx](#) nutzen, z.B. zur Ergebnissicherung.
- Ob man die Umgebung und den Föhn thematisiert, kommt auf die Lerngruppe an.
- Für die „Umgebung“ werden zwei verschiedene Möglichkeiten (drinnen/draußen) angeboten.
- Alternativ kann man die kleinen Karten mit den gleichen Abbildungen aus [4105\\_E-Fluss\\_Uebertragung\\_klein.docx](#) einsetzen.
- Beispiel für ein mit der Klasse entwickeltes Tafelbild (laminierte Karten unsortiert auf Seitentafel, Schülerinnen und Schüler sortieren):

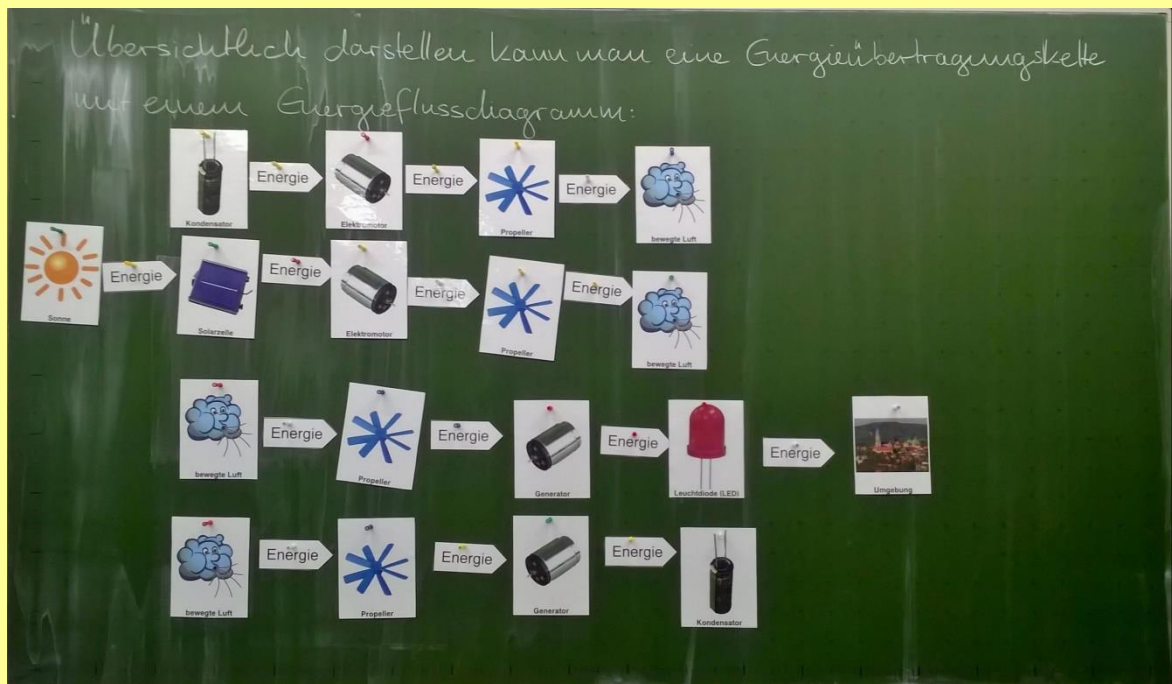
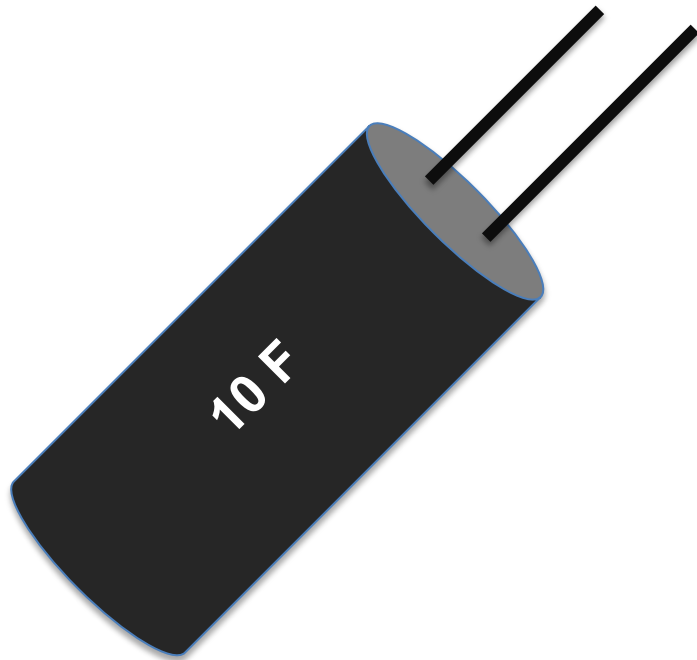
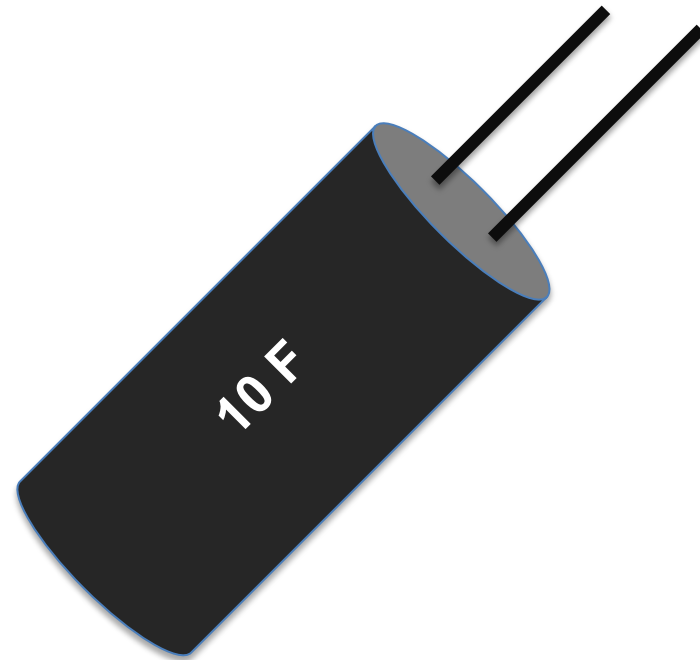


Foto: C.-J. Pardall



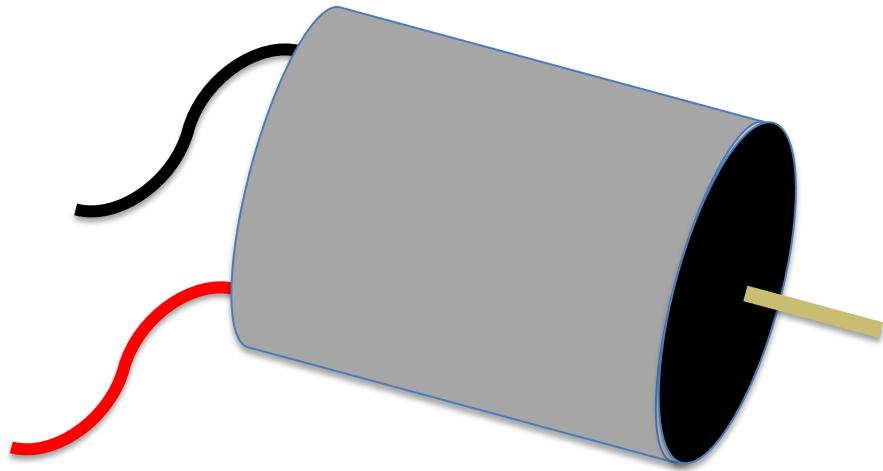
C.-J. Pardall

**Kondensator**



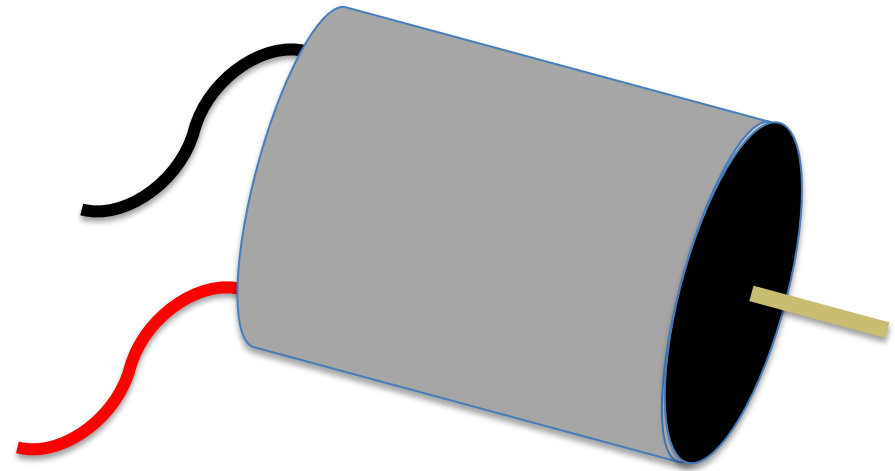
C.-J. Pardall

**Kondensator**



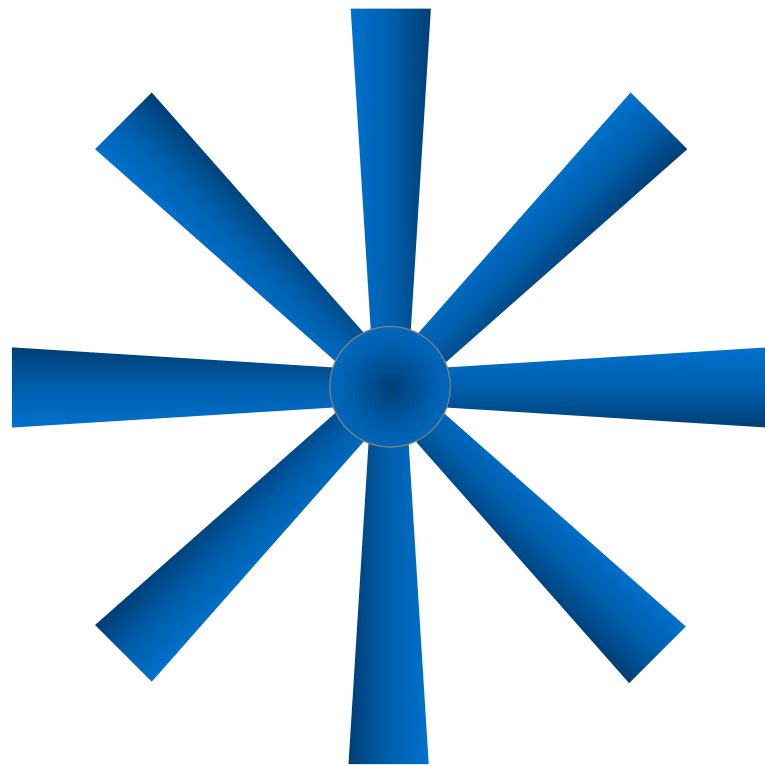
A. Mink

# Elektromotor



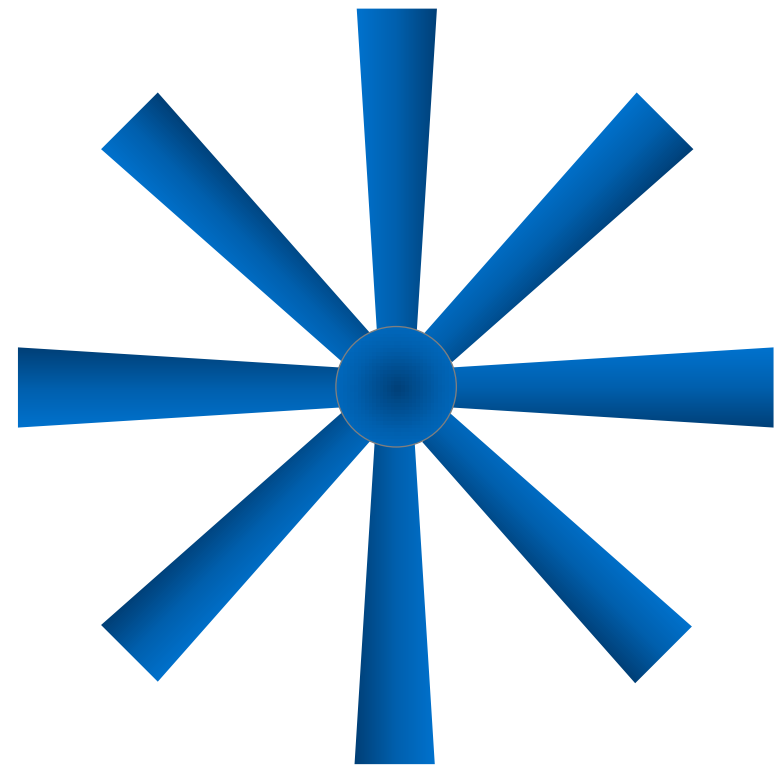
A. Mink

# Elektromotor



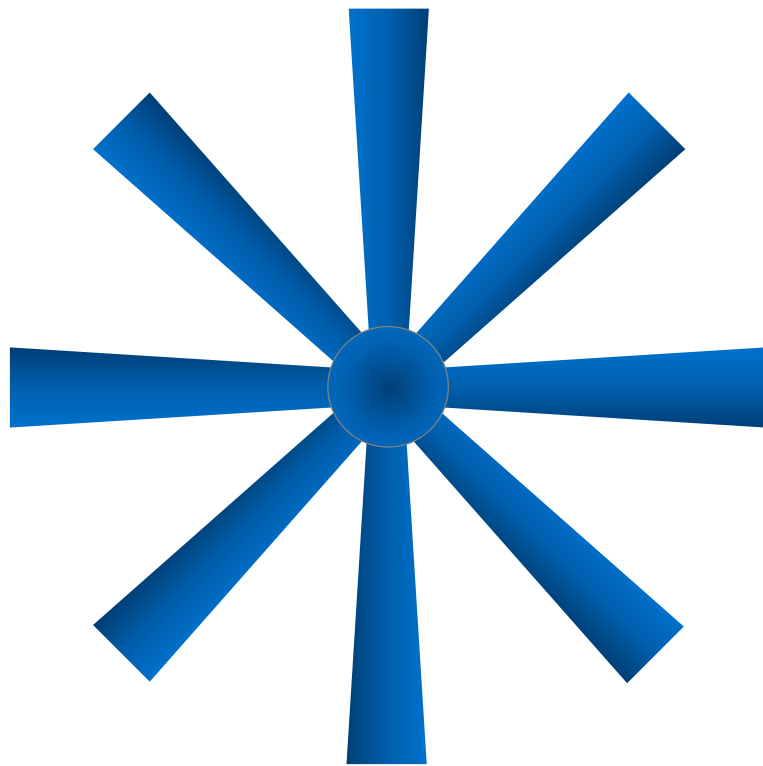
C.-J. Pardall

# Propeller



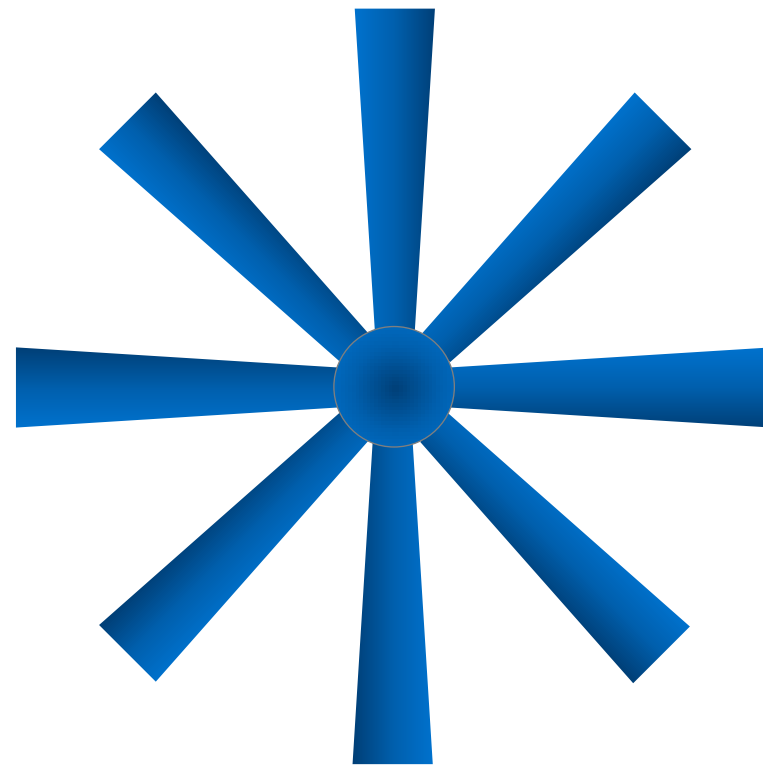
C.-J. Pardall

# Propeller



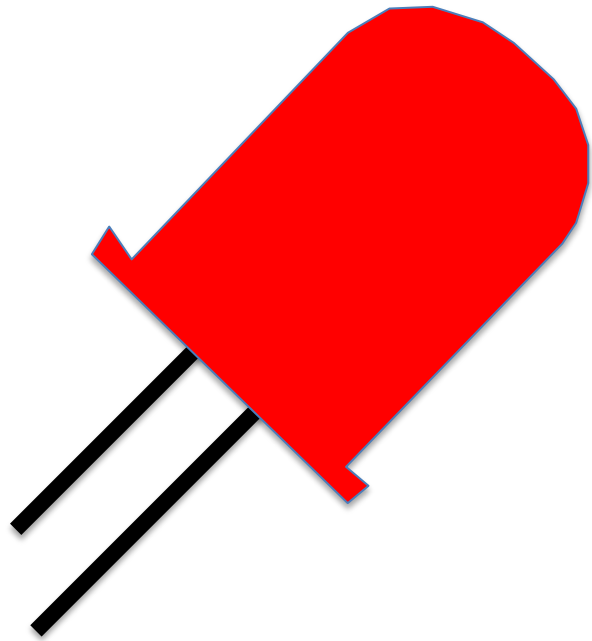
C.-J. Pardall

# Propeller



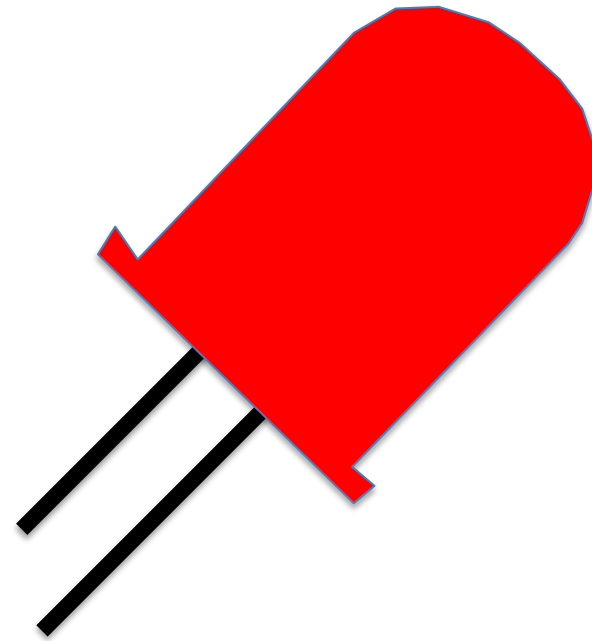
C.-J. Pardall

# Propeller



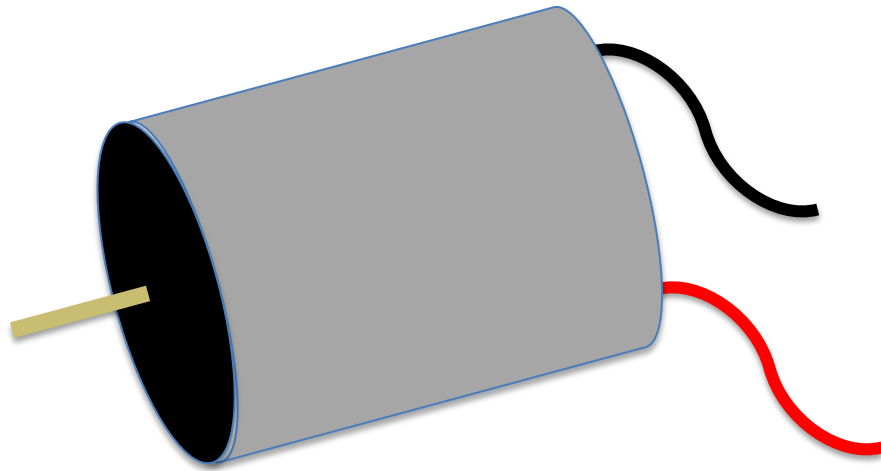
A. Mink

**LED**



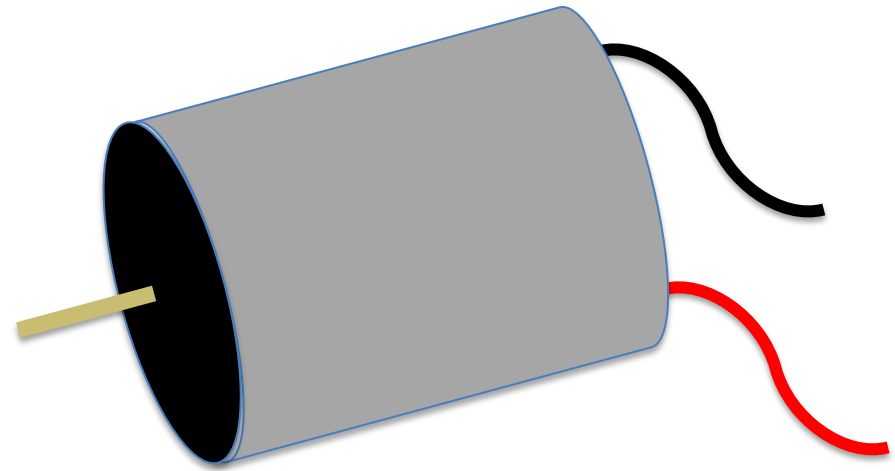
A. Mink

**LED**



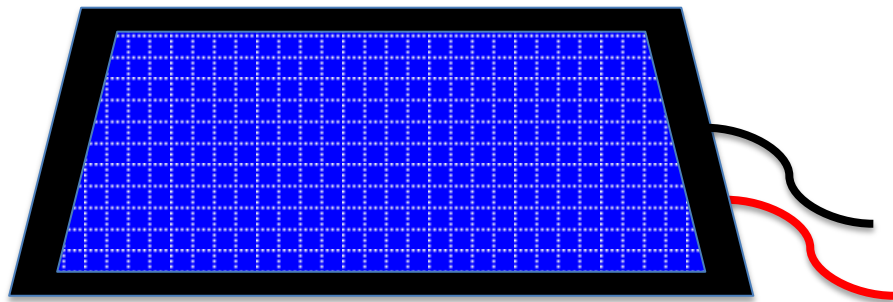
A. Mink

# Generator



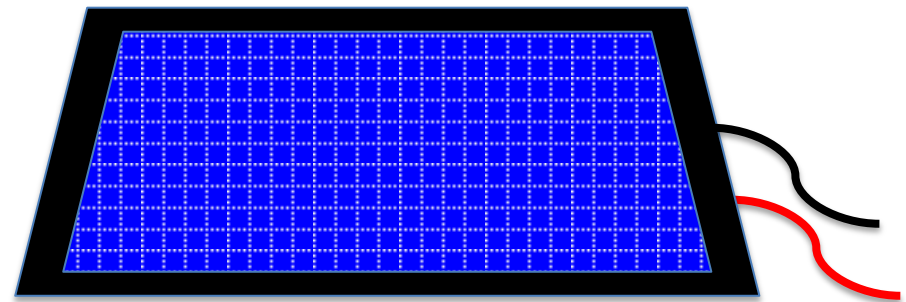
A. Mink

# Generator



A. Mink

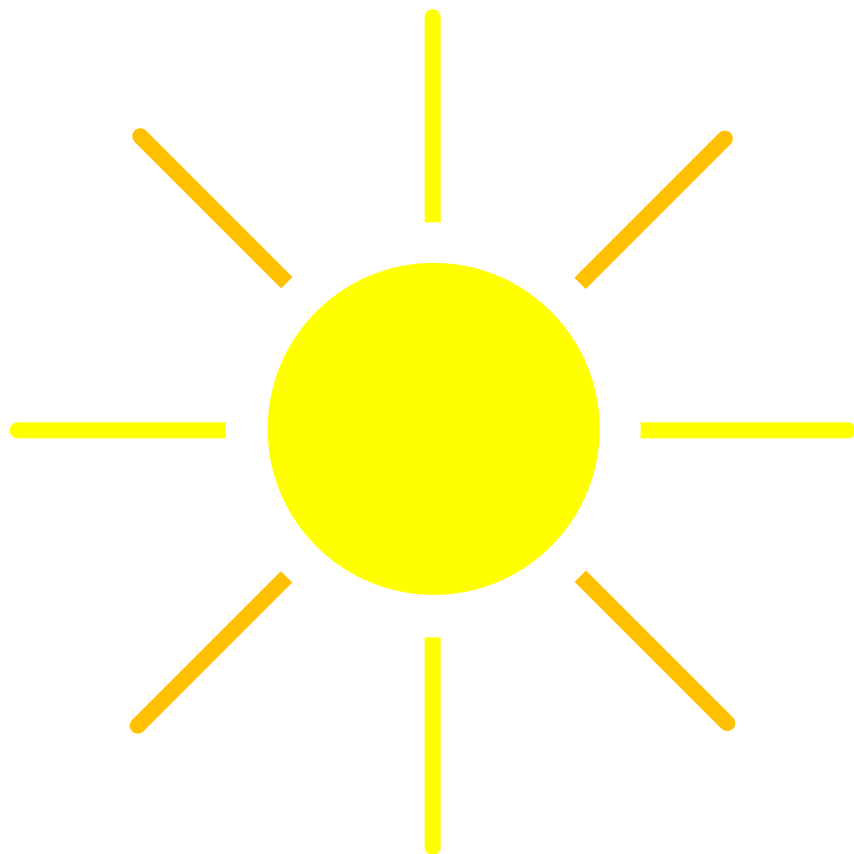
**Solarzelle**



A. Mink

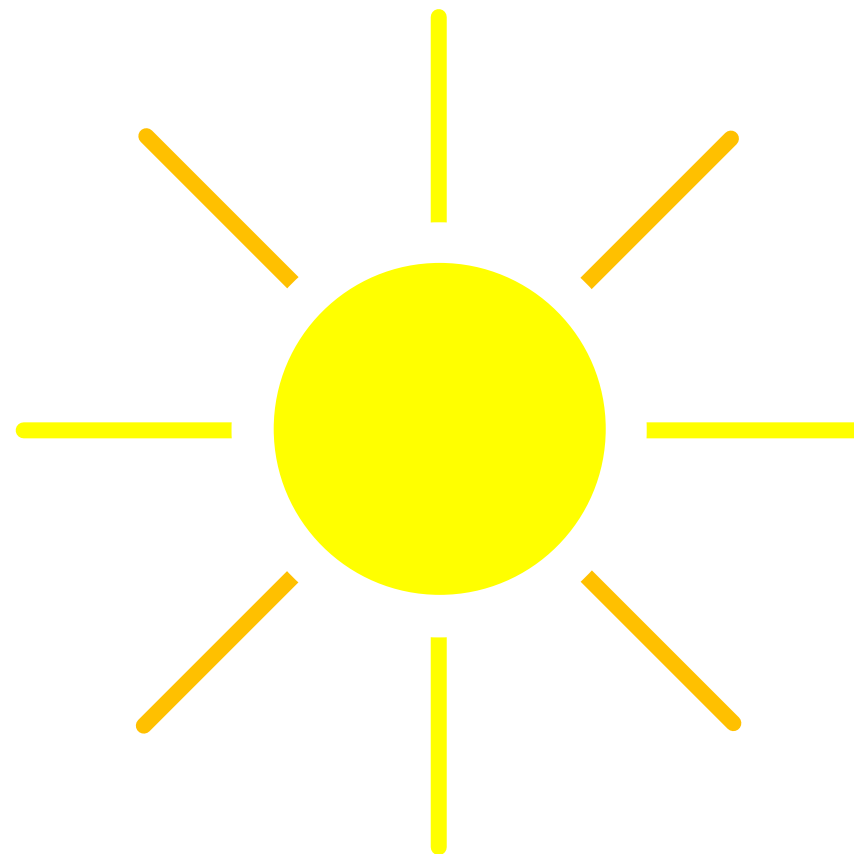
**Solarzelle**





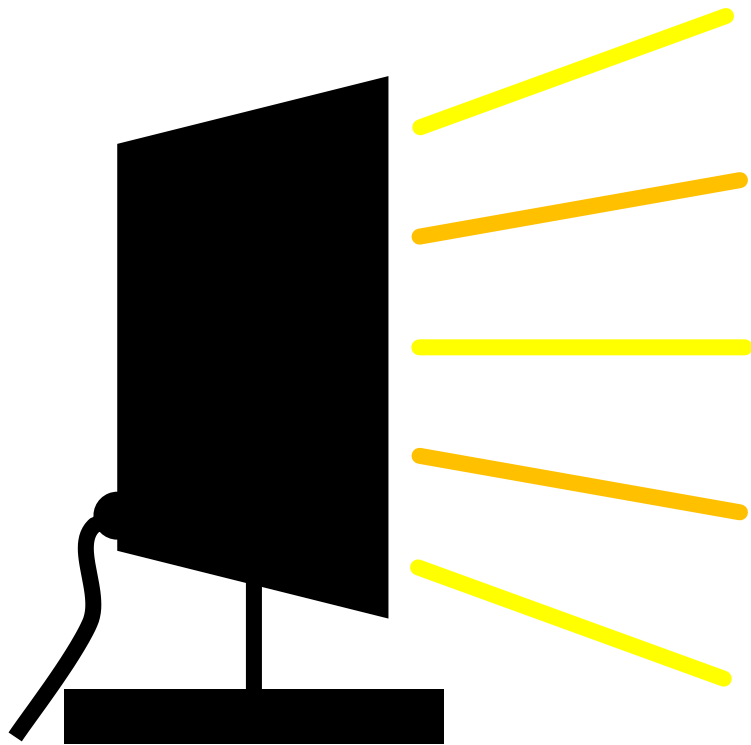
C.-J. Pardall

**Sonne**



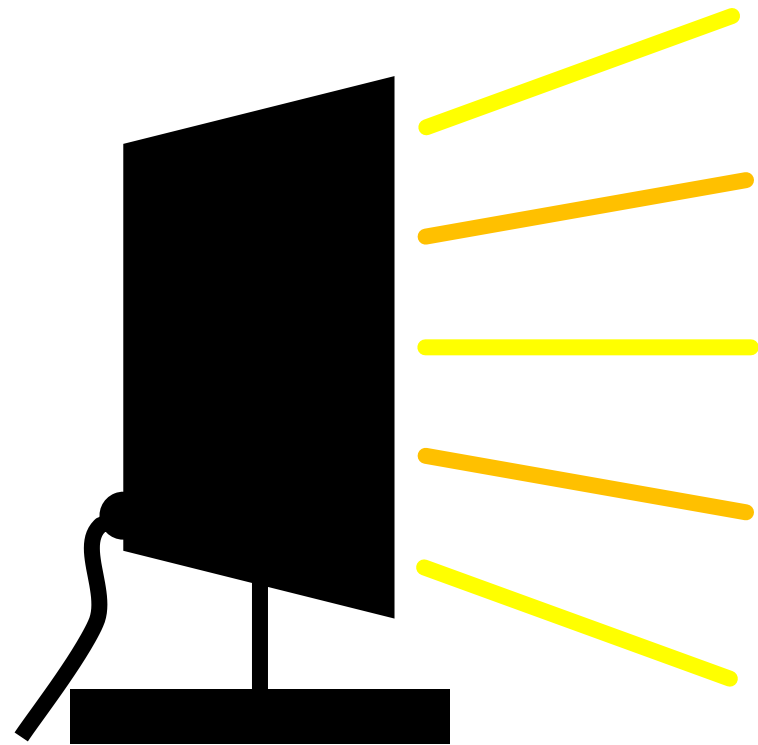
C.-J. Pardall

**Sonne**



C.-J. Pardall

**Lampe**



C.-J. Pardall

**Lampe**



<https://openclipart.org/detail/648/sunquad-clubhouse> (08.02.17)

# Umgebung



<https://openclipart.org/detail/648/sunquad-clubhouse> (08.02.17)

# Umgebung



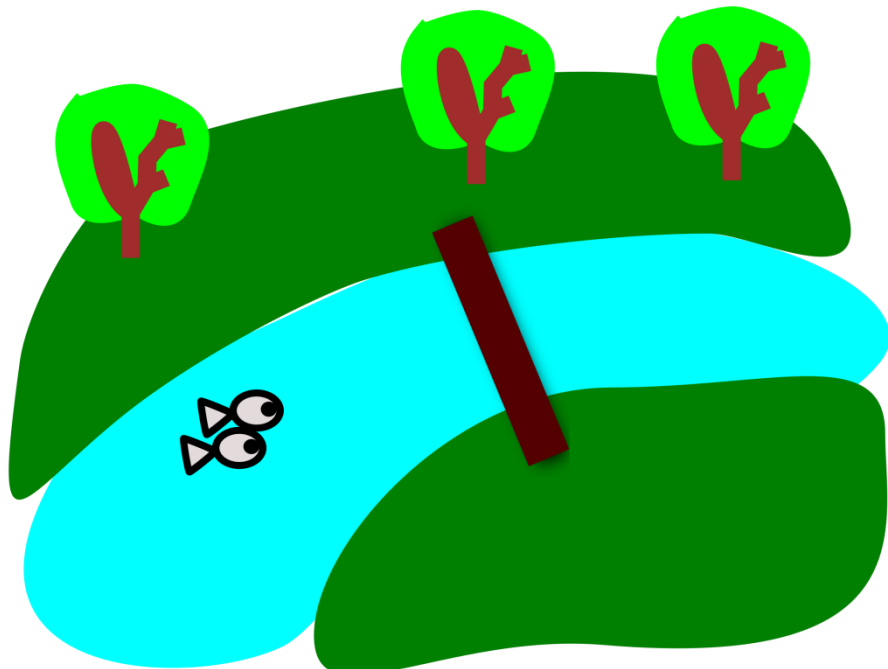
<https://openclipart.org/detail/648/sunquad-clubhouse> (08.02.17)

# Umgebung



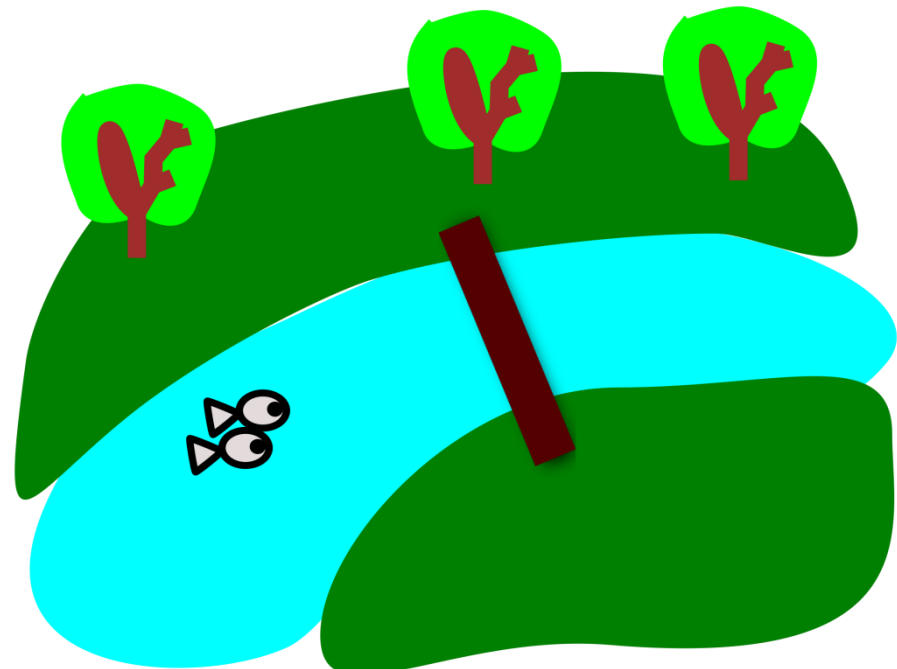
<https://openclipart.org/detail/648/sunquad-clubhouse> (08.02.17)

# Umgebung



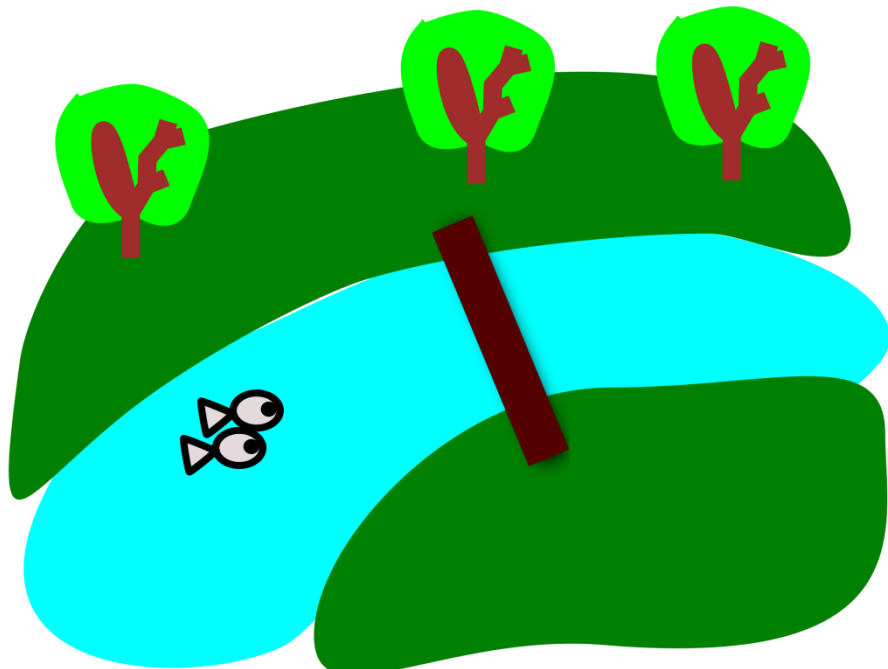
<https://openclipart.org/detail/190864/river-between-the-green-fields-with-trees> (23.02.17)

# Umgebung



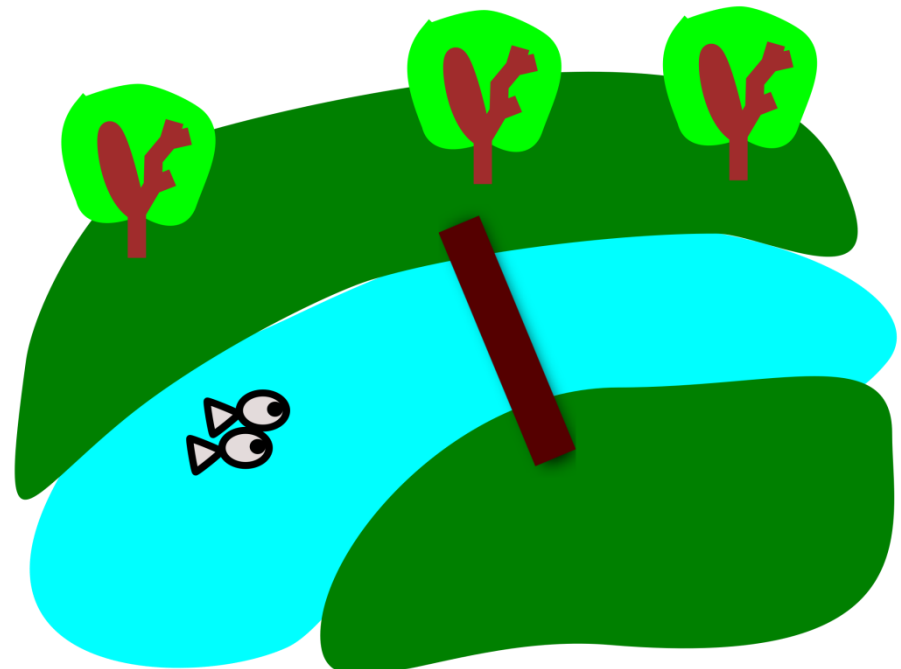
<https://openclipart.org/detail/190864/river-between-the-green-fields-with-trees> (23.02.17)

# Umgebung



<https://openclipart.org/detail/190864/river-between-the-green-fields-with-trees> (23.02.17)

# Umgebung



<https://openclipart.org/detail/190864/river-between-the-green-fields-with-trees> (23.02.17)

# Umgebung



<https://openclipart.org/detail/214444/wind-coloured> (08.02.17)

**bewegte Luft**



<https://openclipart.org/detail/214444/wind-coloured> (08.02.17)

**bewegte Luft**



<https://openclipart.org/detail/214444/wind-coloured> (08.02.17)

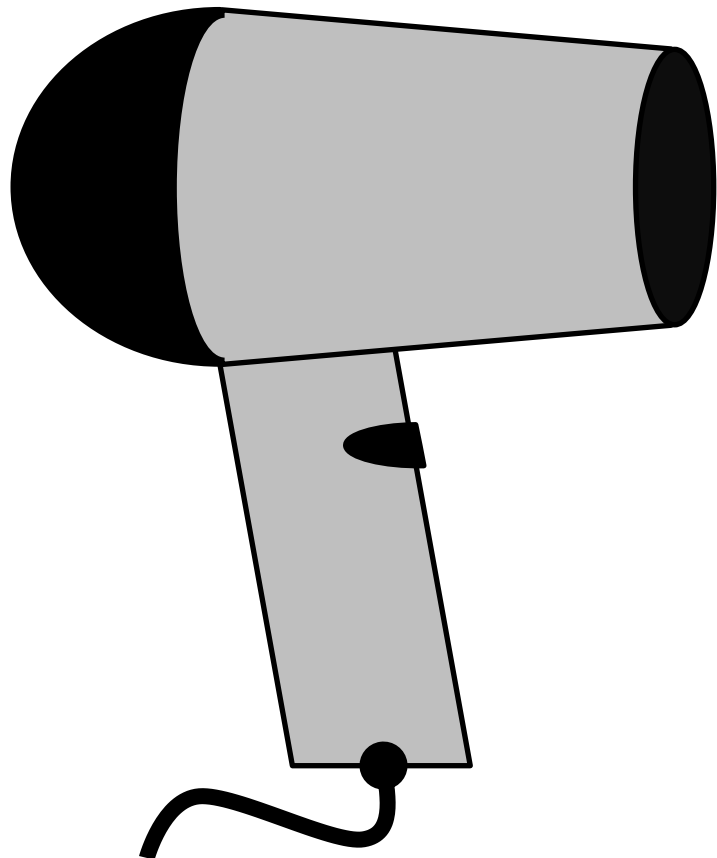
**bewegte Luft**



<https://openclipart.org/detail/214444/wind-coloured> (08.02.17)

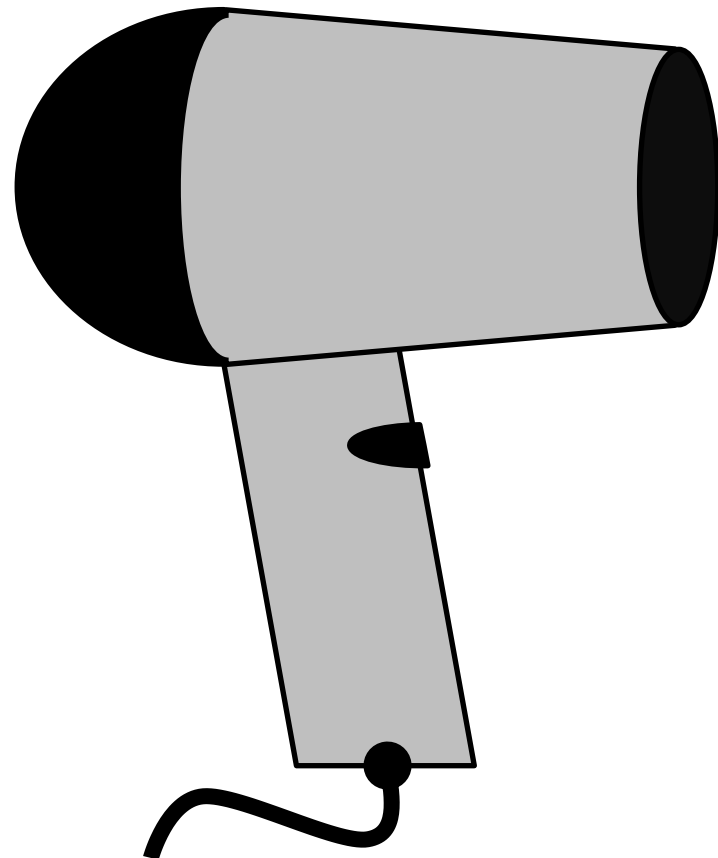
**bewegte Luft**





C.-J. Pardall

**Föhn**



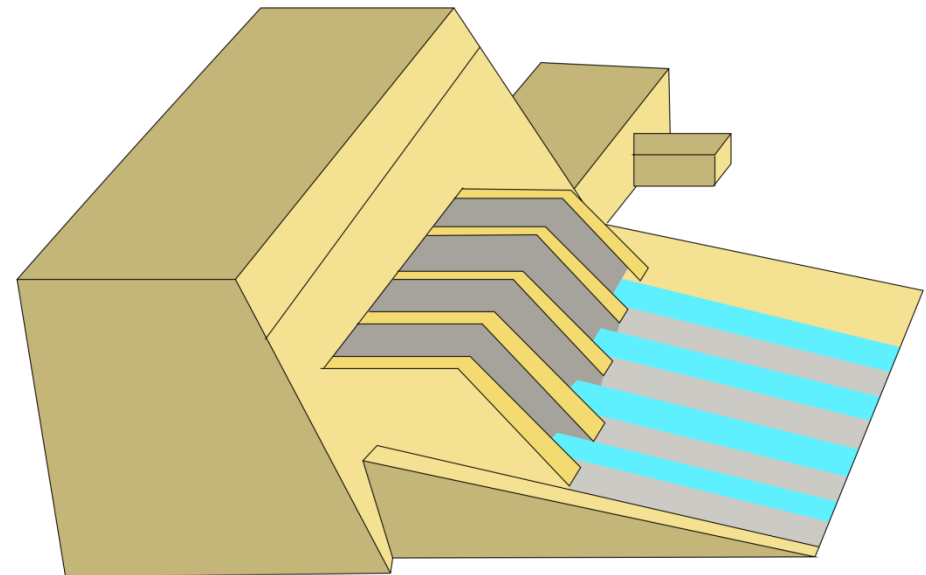
C.-J. Pardall

**Föhn**



C.-J. Pardall

**bewegtes Wasser**



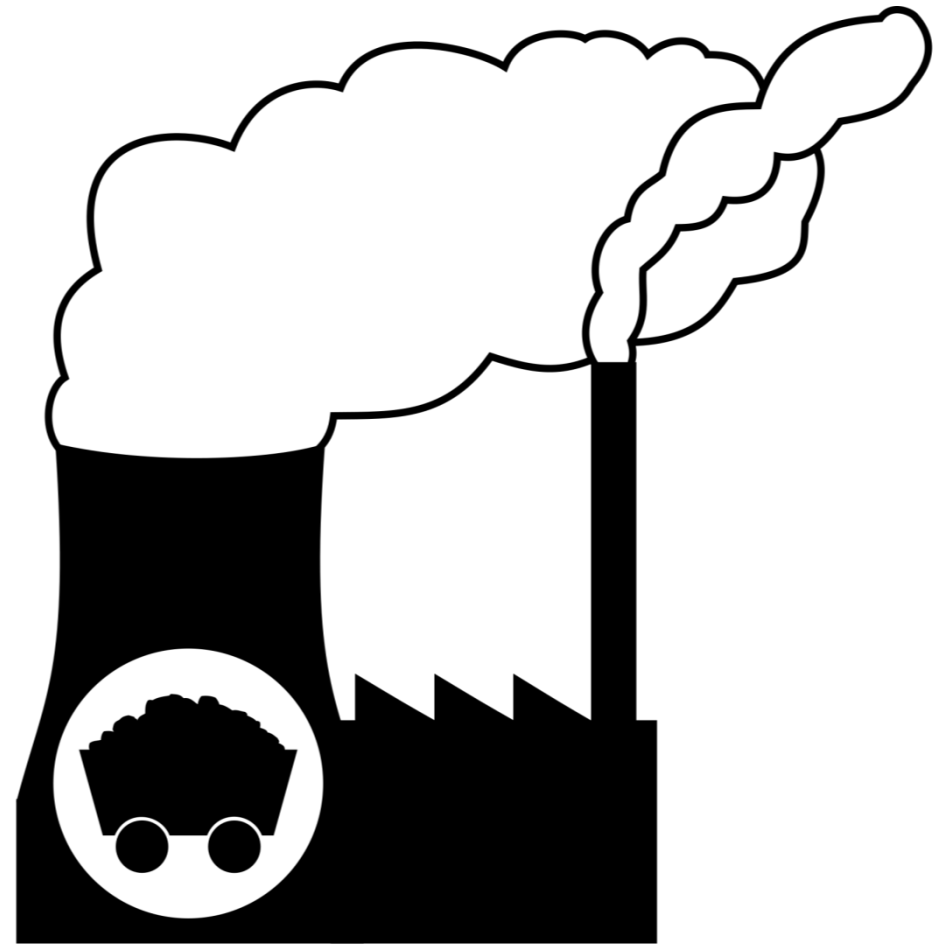
<https://openclipart.org/detail/224027/hydroelectric-dam-colored> (22.02.17)

**Wasserkraftwerk**



<https://openclipart.org/detail/184808/vaga%C2%B3n-de-carbon-coal-wagon> (22.02.17)

**Kohle**

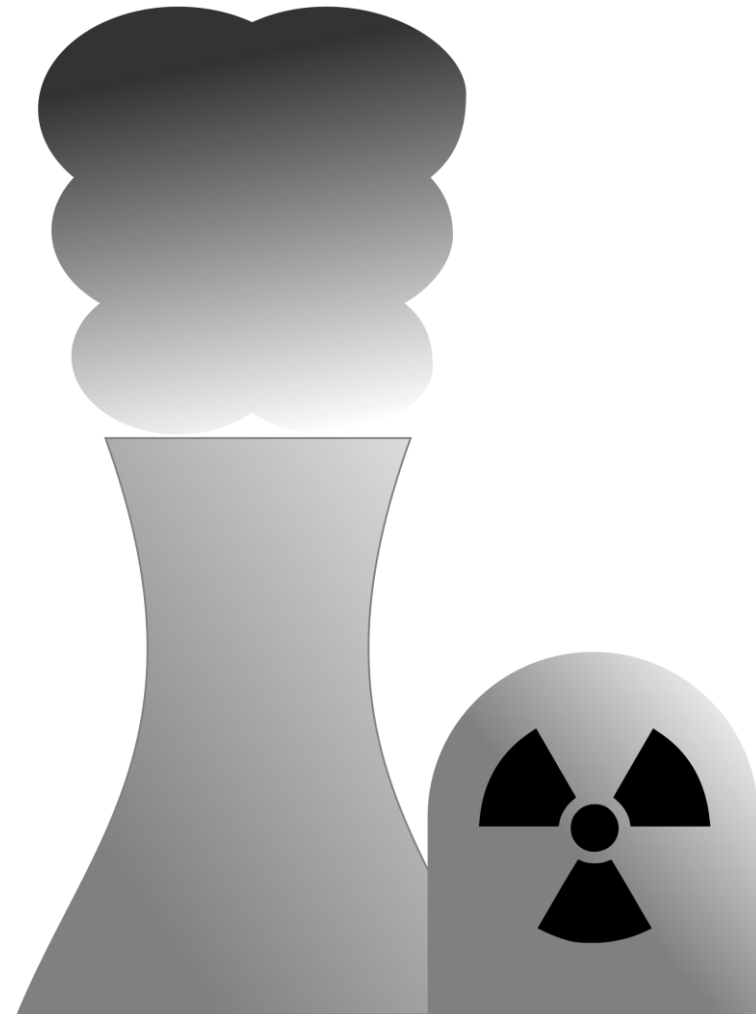


<https://openclipart.org/detail/169425/mutable-powerplant> (22.02.17)

**Kohlekraftwerk**



**radioaktive Stoffe**



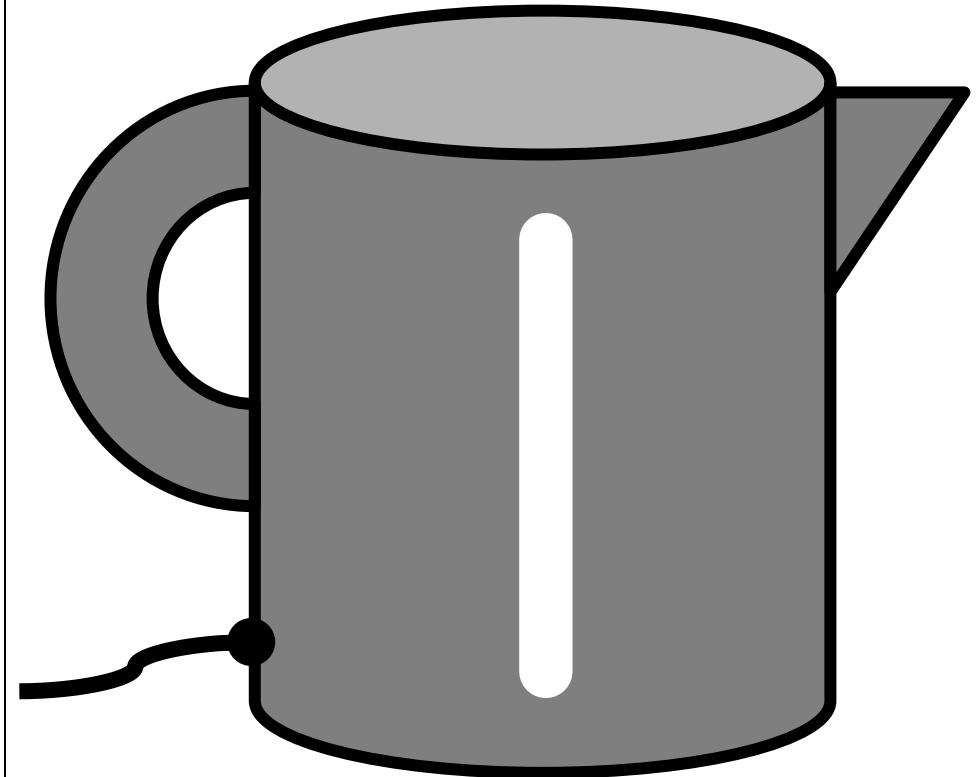
<https://openclipart.org/detail/130465/nuclear-power-plant-kernkraftwerk> (22.02.17)

**Kernkraftwerk**



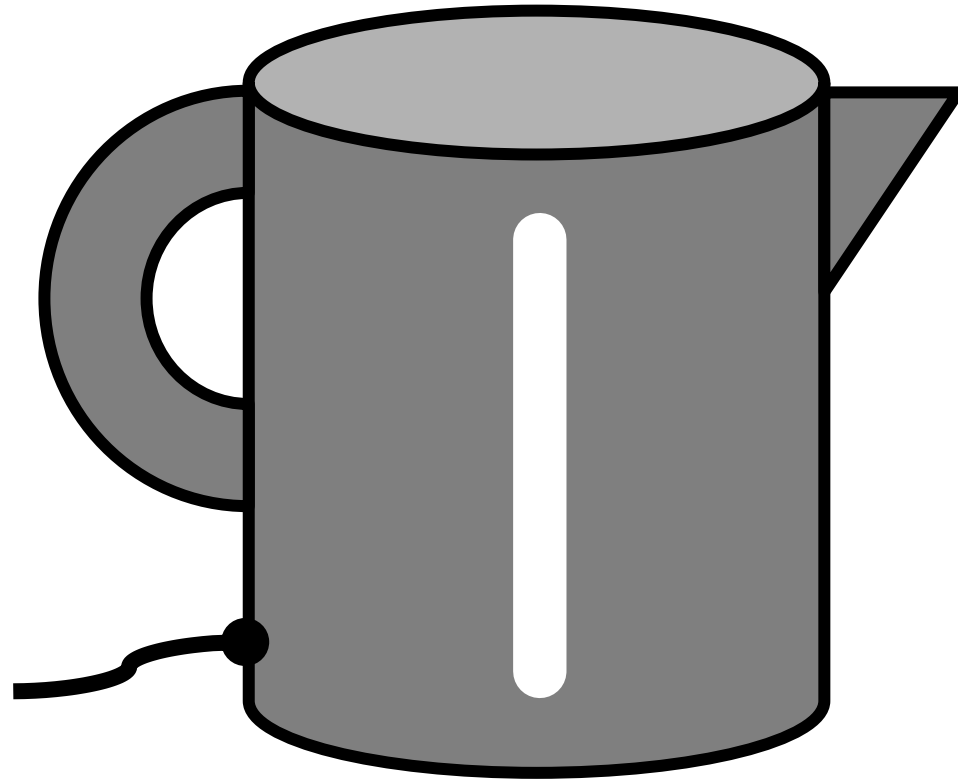
<https://openclipart.org/detail/165446/palo-eolico> (22.02.17)

**Windenergieanlage**



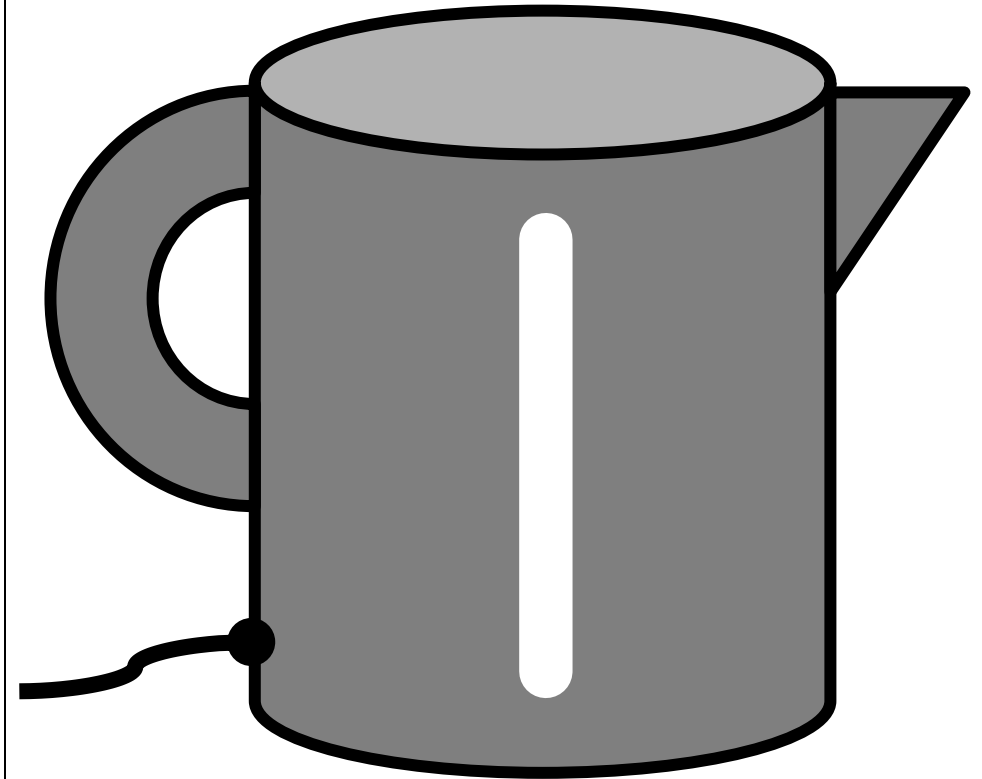
C.-J. Pardall

**Wasserkocher**



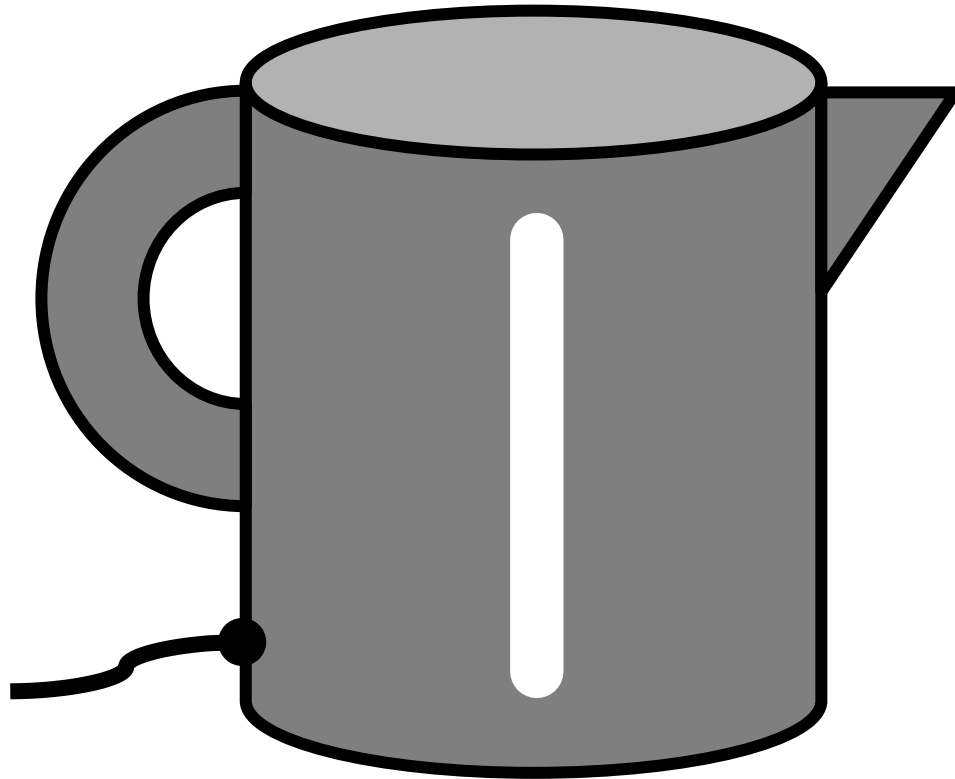
C.-J. Pardall

**Wasserkocher**



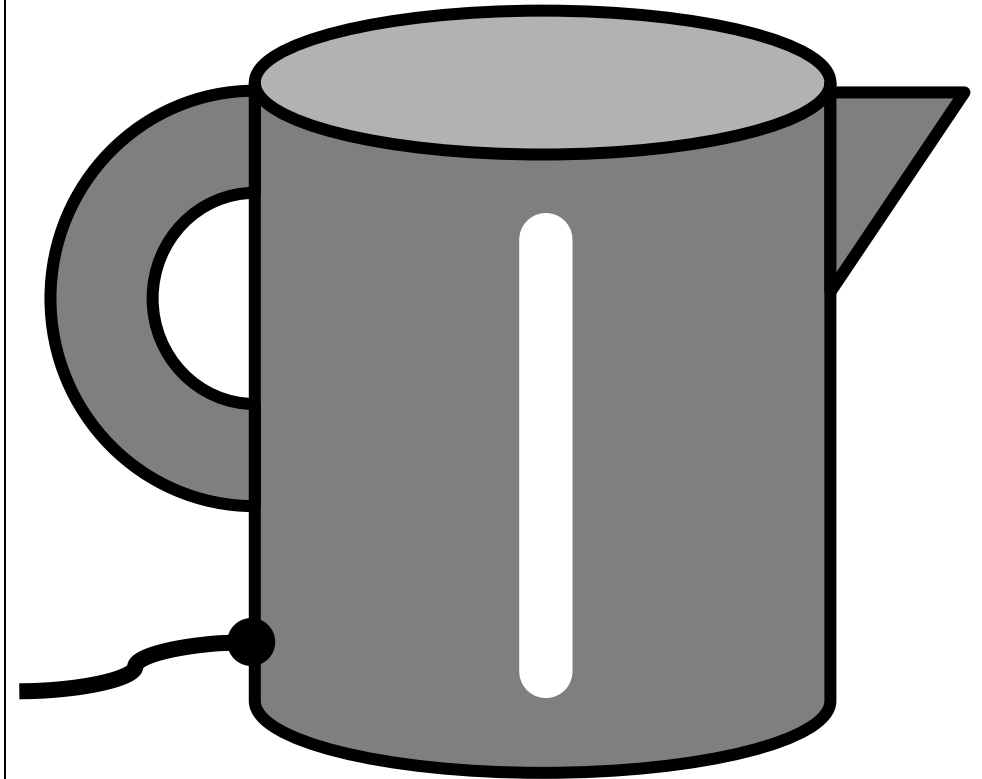
C.-J. Pardall

**Wasserkocher**



C.-J. Pardall

**Wasserkocher**



C.-J. Pardall

**Wasserkocher**

Energie

Energie

Energie

Energie

Energie

Energie



**Energie**

**Energie**

**Energie**

**Energie**

**Energie**

**Energie**

Energie

Energie

Energie

Energie

Energie

Energie

Energie

Energie

Energie

Energie

Energie

Energie